

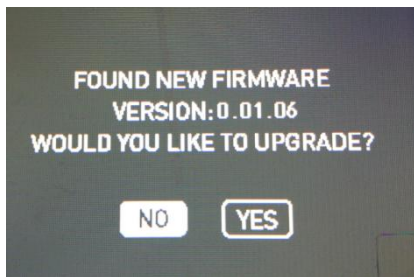
INSTRUCTION

Evoke 1200

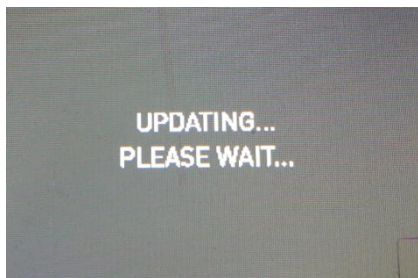
Evoke 1200 fixture firmware update

● How to update the firmware of Evoke 1200:

1. Download the firmware installation package from the website.
2. The update file "EVOKE_1200_Fw_Vx.xx.xx.upd" must be in the root directory of the USB flash drive.
3. Turn off the Evoke 1200. Insert the USB flash drive into the USB port of the fixture and then turn on the fixture, the screen will show as below:



4. Rotate the right knob to choose "YES" and then press the right knob to start updating, the screen will show as below:



5. The fixture will work normally after the update is completed.

● Precautions:

1. Ensure the USB version is USB2.0 and is formatted to FAT or FAT32. (Currently does not support the USB flash drive of SanDisk USB 3.0 and above.)
2. Please do not rename the update file.
3. Please ensure the updated file is in the root directory of the USB flash drive.

● Troubleshooting:

1. If the lighting fixture cannot identify the USB flash drive, please try the following:

- 1) Ensure the name of the firmware is "EVOKE_1200_Fw_Vx.xx.xx.upd".
- 2) Ensure the format of the USB flash drive is FAT32 or FAT. If the format is not FAT32 or FAT, please format the USB flash drive to FAT32 or FAT before copying firmware onto it. Then follow the update instructions above to update again.
- 3) If the format of the USB flash drive is FAT32 or FAT.
 - ① Please ensure upgrade package file is in the root directory of the USB flash drive.
 - ② Please try to re-format the USB flash drive and follow the update instructions above to update again.
- 4) If the two steps mentioned above have been followed but the USB flash drive still cannot be identified, please replace the USB flash drive with another one.

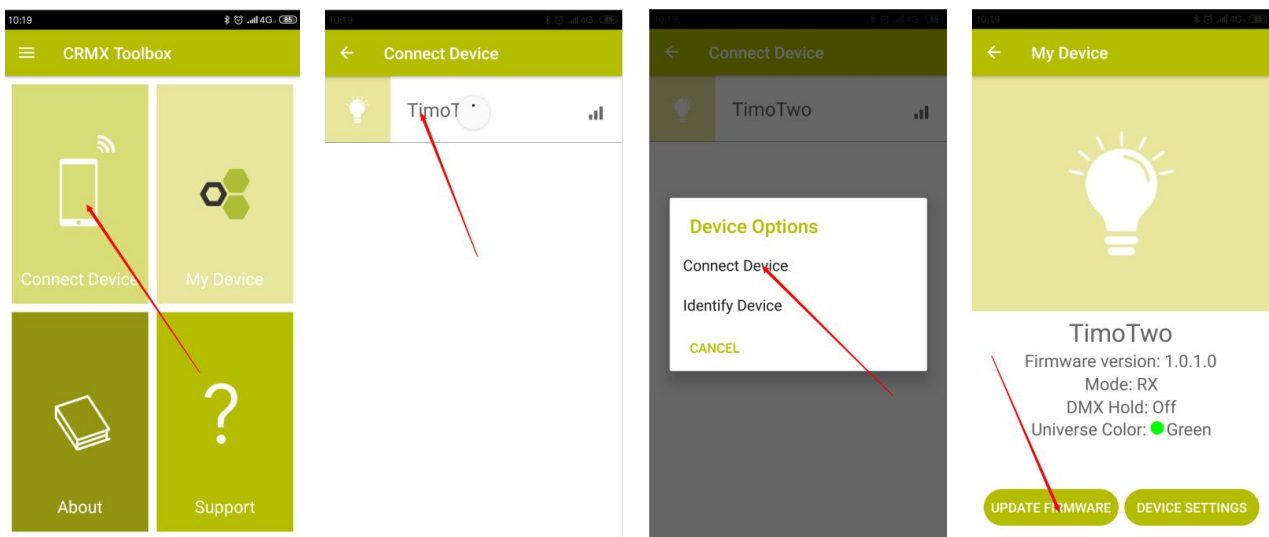
2. The lighting fixture can identify the USB flash drive, but the interface of the screen remains displaying "updating" for over 5 mins and cannot return to the operation interface.

- 1) Please restart the lighting fixture and follow the update instructions again to enter the updating state. If the problem still cannot be solved by rebooting the fixture, please try the next step below.
- 2) Please try to format the USB flash drive and follow the update instructions above to update again.
- 3) If the two steps mentioned above have been followed but the USB flash drive still cannot be identified, please replace the USB flash drive with another one.

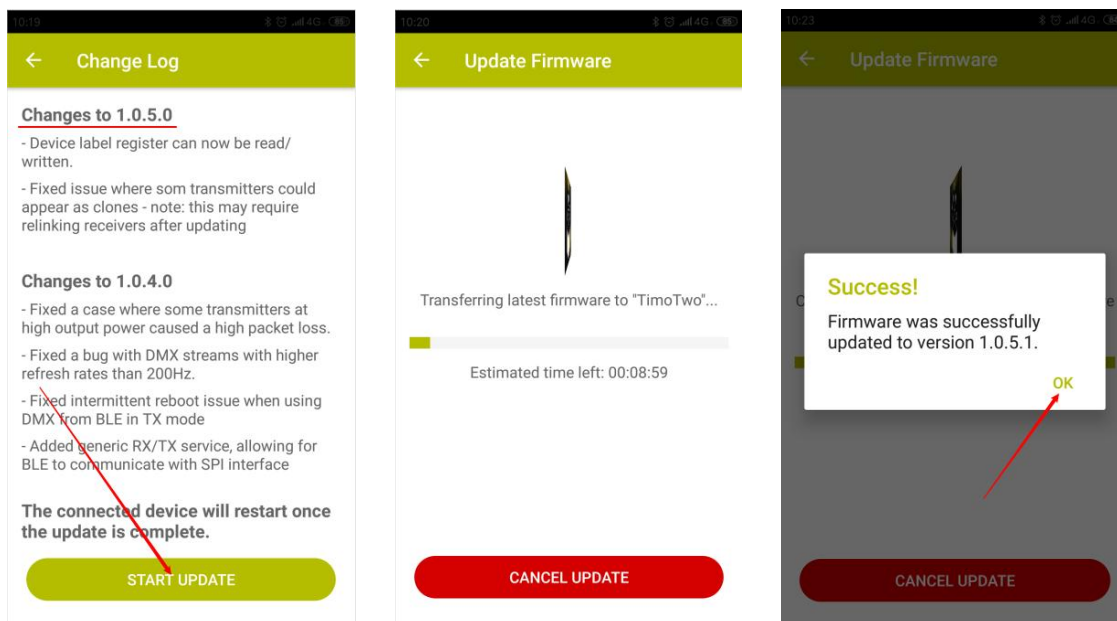
Lumenradio firmware update

1. Download the CRMX TOOLBOX from App Store or Google Play.
2. Turn on the Bluetooth on phone and open the CRMX Toolbox APP, then follow the steps below to enter the upgrade interface.

Click "Connect Device" -> wait until "TimoTwo" appears in the search, click "TimoTwo" -> click "Connect Device" -> click "UPDATE FIRMWARE".



3. Enter the upgrade interface, the current latest firmware version is 1.0.5.0, click "START UPDATE" to start the upgrade, when the upgrade is completed, the screen will pop up a "Success" prompt box, click "OK" to complete the update.



4. If the update fails, please follow the steps 2 and 3 to update again.