



Hunan Minghe Opto Tech Co.,Ltd

Add: No.2, Xiang Yang Rd, Changsha
National Economic Development Zone, Hunan,P.R. China
Tel: +86-731-85252378 400-000-2198
Mobile/whatsapp: 0086 18566661214
Fax: +86-731-84029869
Http: //www.mhgled.com
E-mail: salesmanager@minghegroup.com
2018 All Right Reserved.All specifications subject to change without notice.



Web

CONTENTS

COMPANY INTRODUCTION.....	01
HONORS REPRODUCTION.....	02

LED DISPLAY

W3 SERIES RENTAL DISPLAY	05
T4 SERIES LED SCREEN.....	09
D SERIES INDOOR HD SMALL PIXEL PITCH LED DISPLAY	13

LED FRESNEL LIGHT

M-L200J-WW	19
M-L300J-RGBW	20
M-L100J-3200/5600WK.....	21
M-L200J-3200/5600WK.....	22
M-L300J-3200/5600WK.....	23
M-L200JP-3200/5600WK	24
M-L300JP-3200/5600WK	25

LED ELLIPSOIDAL LIGHT

M-L180CX-3200/5600W	27
M-L300CX-3200/5600W	28
M-L300CX-1530/2550.....	29
M-L300CX-WW	30
M-L300CX-WW-1530/2550	31
M-L300CX-RGBW	32
M-L300CX-RGBW-1530/2550	33

LED SOFT PANEL LIGHT

M-L280PR-WW (DX).....	35
M-L100PR-3200/5600W/WW	36
M-L160PR-3200/5600W/WW	37
M-L280PR-WW.....	38
M-L280PR-WW (N)	39
M-L324PR-RGBW.....	40
M-L324PR-7S	41

LED PAR LIGHT

M-L0360T1-RGBW (4in1)	43
M-L0730T1-RGBW (4in1)	44
M-L1415T1-RGBW (4in1)	45
M-L1915T1-RGBW (4in1)	46
M-L183T1-RGBW (Z)	47
M-L183T1-RGBW (4in1)	48
M-L183T1-RGBWPY (6in1)	49
M-L162T1-RGBW.....	50
M-L162T2-RGBW.....	51

MOVING HEAD LIGHT

M-L600-BLADE	53
MH-1400-BEAM.....	54
M-L420YZ-RGBW (4in1).....	55
M-L1430YZ-RGBW (4in1).....	56
M-L2815YZ-RGBW (4in1).....	57
M-L285YZ-RGBW (4in1).....	58
M-L324YZ-RGBW.....	59

COMPANY INTRODUCTION

Established in 2001, Hunan Minghe Opto Tech Co., Ltd, located in Changsha National Economic Development Zone, is a professional manufacturer of LED display, LED digital spot light, LED digital profile light, LED panel light, Outdoor LED par, LED moving head wash. Especially, our excellent design and installation in theater & TV studios projects with our CE/SGS/ROHS/ETL approved products help us win large numbers of customers from Europe, Asia, North and South America, Australia, Africa market. We have enjoyed a high reputation for the excellent quality, stable property and perfect after-sales service both at home and abroad.

We are the National Culture Industry Demonstration Base, National Key Export Enterprise, China Entertainment Technology Association Executive Director Unit, The Member of Seminar of China Television Broadcasting Institution, and Society of China Illumination.

Based on Innovative technology and HR oriented service tenet, we will keep on innovating to meet the ever-changing market, and we will keep on cooperating with our customers with fait and dedication to build up a brilliant and splendid stage life together.



HONORS REPRODUCTION

MHG is dedicated in improving RD capacity, 5% annual in sales amount will be put into RD. Until now, LED display has got CCC, CE, ROHS, ETL certificates.



- National Cultural Industry Demonstration Base
- National High - tech Industry
- National Key Export Enterprise
- Executive director of China Performing Arts Equipment Technology Association
- Executive director of China Stage Art Association
- Executive director of China Radio and Television Society Lighting Research Association
- Hunan Famous Brand Enterprise
- Changsha Enterprise Technology Center
- Changsha innovative enterprises
- IOS9001:2015 Certificate
- ect





LED DISPLAY SOLUTION

W3 SERIES RENTAL DISPLAY

T4 SERIES LED SCREEN

D SERIES INDOOR HD SMALL PIXEL PITCH LED DISPLAY



**W3 SERIES RENTAL DISPLAY
(CARBON FIBER+MAGNESIUM ALLOY)**

PRODUCTS FEATURE

1. Perfect combination of Die-casting Magnesium alloy and Carbon fiber, enables higher strength. Each cabinet is 10kg, easy to carry on and fast installation;
2. Two cabinets connection can be finished within 10 seconds. Precision alignment in direction of up-down, left-right;
3. Front service and rear service supported, and control part is modular design;
4. Perfect combination of Carbon fiber and Magnesium alloy frame with high tensile strength;
5. Hanging Beam compatible and integrated design; Support to up-down, left -right suspending adjustment and horizontal correction. At the same time, two beams can be connected tightly easily;
6. Anti-damage design; accurate alignment of up-down and left-right; enabling high precision positioning.

01

PRODUCT STRUCTURE



02

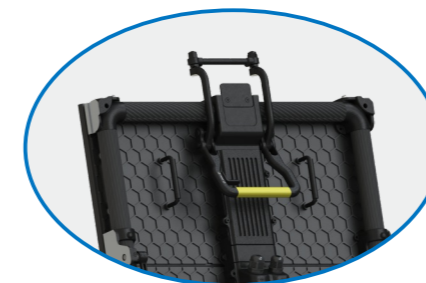
PRODUCT FEATURES

1 FAST INSTALLATION

Two cabinet connection can be finished within 10 seconds.

2 MODULAR DESIGN

Front service and rear service supported, and control part is modular design.



3 NEW STRUCTURE DESIGN

Combination of magnesium alloy and carbon fiber, enables higher strength.



4 ANTI-DAMAGE DESIGN, AND HIGH PRECISION POSITIONING

Can protect the lamps and mask on the bottom cabinet. And also allows high precision positioning.



5 LIGHTER WEIGHT

Combination of magnesium alloy and carbon fiber, makes the structure stronger, and higher precision. Each cabinet is 10Kg, easy to carry on and fast installation.



6 SPECIAL DESIGN OF HANGING BEAM

Support to adjust up and down, right and left, to make the beam balanced. At the same time, two beams can be connected tightly easily.



7 INNOVATIVE STACKING SOLUTION

Unique and innovative design, tool-free stacking integration solution.



03 PRODUCTS SPECIFICATIONS

Model	W3-311	W3-391	W3-481	W3-390	W3-480
Working Environment	indoor	indoor	indoor	outdoor	outdoor
Pixel Pitch(mm)	3.125mm	3.906mm	4.807mm	3.906mm	4.807mm
Physical Density (pixel/m ²)	102400	65536	43264	65536	43264
LED Sources	SMD2020 RGB black LED			SMD1921	SMD2525 & SMD2727
Module Size(mm)	250x250	250x250	250x250	250x250	250x250
Module Resolution (Dots)	80x80	64x64	52x52	64x64	52x52
Drive Mode	20	16	13	16	13
Cabinet Resolution (Dots)	160x320	128x256	104x208	128x256	104x208
Cabinet Size(mm)	500x1000				
Gross Weight (kg)	10kg			11kg	
Material	Magnesium alloy+carbon fiber				
Input Power Consumption (W/m ²)	1000				
Max Power Consumption(W/m ²)	600W			650W	
Brightness (nits)	600 ~ 1000			≥4000	
Color Temperature(K)	5000K-25000K				
Contrast	4000:1				
Grey Scale	16bit				
Refresh Rate (Hz)	1920HZ~3840HZ				
Frame Frequency	60HZ				
Protection Grade	Ip50			Ip65	
Working Temperature	-10°C~40°C			-20°C~50°C	
Humidity(RH)	40%~60%			10%~90%	
Working Humidity	10%-90%RH			10%R ~ 95%RH	
Maintenance mode	front and back maintenance				

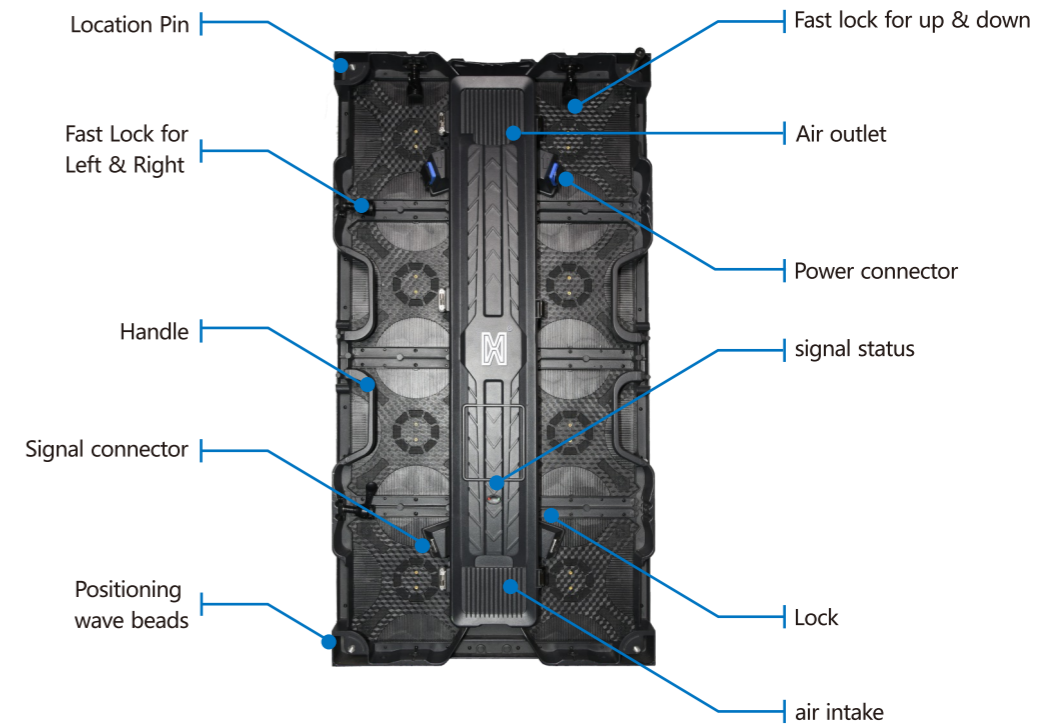


T4 SERIES LED SCREEN

PRODUCTS FEATURE

T4 series is Die cast aluminum LED screen which mainly used for Theater,stage events,TV stations etc.It's highly combined to make maximum assured the product compatibility & universality to be perfectly used for Theater,stage events,TV stations etc.

01
PRODUCT STRUCTURE

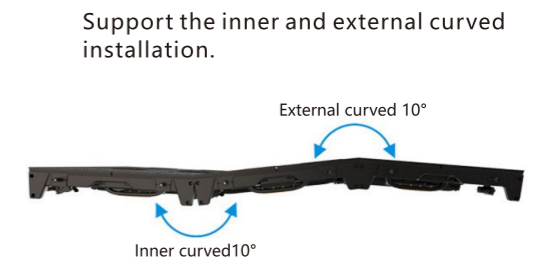


02
PRODUCT FEATURES

1 VARIABLE CABINET SIZE COMBINATION
500×500mm & 500×1000mm to flexibly meet stagecreativity demanding.



2 CURVED INSTALLATION
Support the inner and external curved installation.



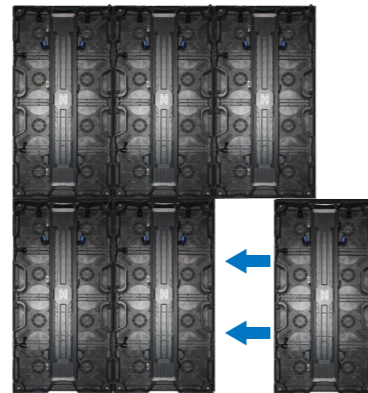
3 DIVERSIFIED INSTALLATION METHODS

Support Hanging, Standing, Fixed installation, etc.



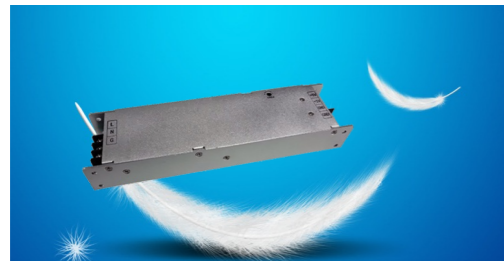
4 SEAMLESS COMBINATION

Cabinet adopt CNC, the dimension tolerance is less than 0.1mm, delicate display effect.



5 LIGHTER WEIGHT

Excellent heat dissipation, mute design.



6 LOW BRIGHTNESS, HIGH GREY SCALE

16bit Gray scale, showing more rich & beautiful colors and clear & delicate images.



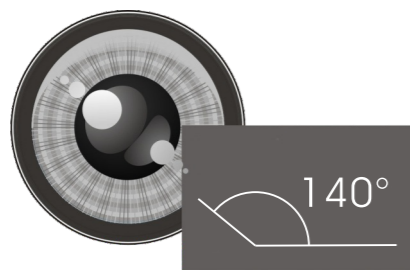
Clear shadow texture



Fuzzy shadow texture

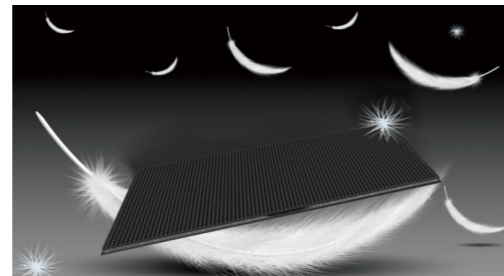
7 BIG VIEW ANGLE

High quality display at all angles.



8 SLIM & LIGHTER CABINET

Die cast aluminum cabinet, more lighter & slim, more convenient on transportation & installation.



03

PRODUCTS SPECIFICATIONS

Model	T4-480	T4-390	T4-481	T4-391
Working Environment	Outdoor		Indoor	
Pixel Pitch	4.807	3.906	4.807	3.906
Physical Density (pixel/m ²)	43264	65536	43264	65536
LED Type	SMD2525	SMD1921	SMD2020	SMD2020
Module Resolution (Dots)	52×52	64×64	52×52	64×64
Module Size(mm)	250×250			
Scanning	13	16	13	16
Cabinet Resolution (Dots)	104×208/104×104	128×256/128×128	104×208/104×104	128×256/128×128
Cabinet Size(mm)	500×1000/500×500			
Gross Weight (kg)	14KG/7.6kg		13Kg/7kg	
Cabinet Material	Magnesium Alloy			
Input Power Consumption (W/m ²)	1000			
Max Power Consumption (W/m ²)	650		600	
Brightness(nits)	≥4000		≥800	
Color Temperature(K)	5000K-25000K			
Contrast	4000:1			
Grey Scale	16bit			
Refreshment(Hz)	1920HZ~3840HZ			
Frame Frequency(Hz)	60HZ			
Protection Grade	Ip65		Ip50	
Working Temperature(°C)	-20°C~50°C		-10°C~40°C	
Working Humidity(RH)	10%~95%RH		10%~90%RH	
Maintenance method	Back Maintenance			



D SERIES INDOOR HD SMALL PIXEL PITCH LED DISPLAY

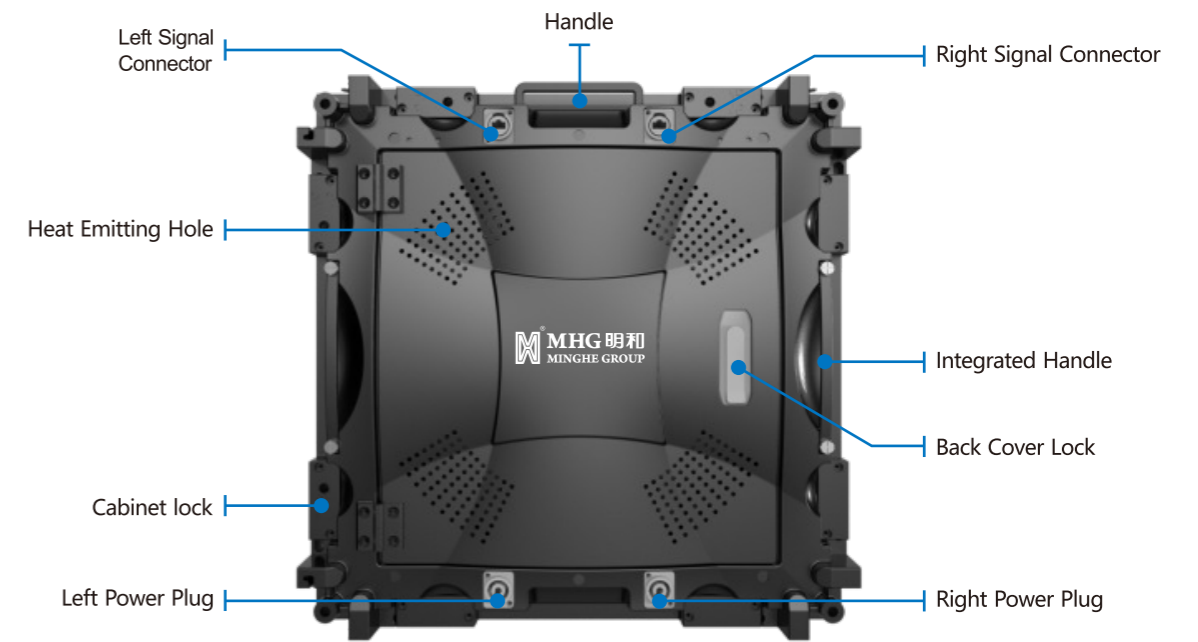
PRODUCTS FEATURE

D series die-casting aluminium LED display is a new HD Small pixel pitch products of MHG . which adopts standardized module die-casting aluminium integrated technology . Through constant upgrading of structure , performance and overall optimization update , improve housing stitching accuracy , makes more smoothly , convenient tear open outfit , maintenance .

Application: Concerts, Conference, Exhibition, Large outdoor activities and other activity places.

01

PRODUCT STRUCTURE



02

PRODUCT FEATURES

1 VARIABLE CABINET SIZE COMBINATION

Each cabinet is only 8.5Kg, and fashionable die casting frame enable 80mm thickness.



Each cabinet is only 8.5Kg

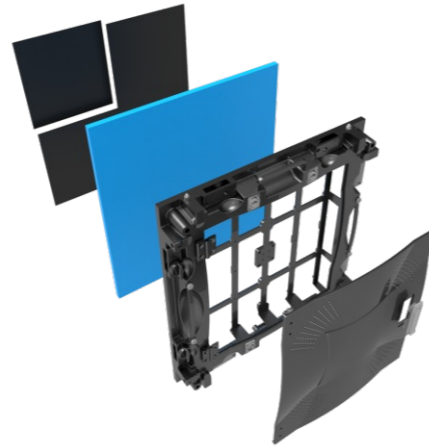
2 HIGH QUALITY CNC DIE-CASTING ALUMINUM CABINET

CNC precision process is adapted for Die-casting Aluminum cabinet, the precision is less than 0.1mm.



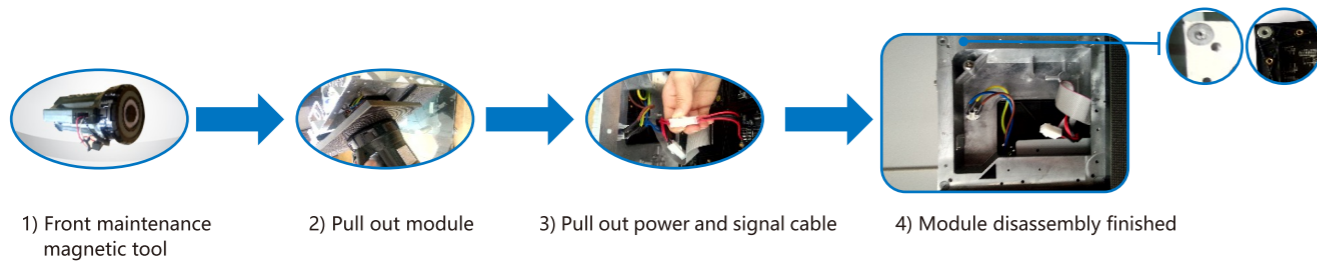
3 SEAMLESS MOSAIC

Unique connector can realize seamless mosaic; One formed model precision is ±0.1mm.



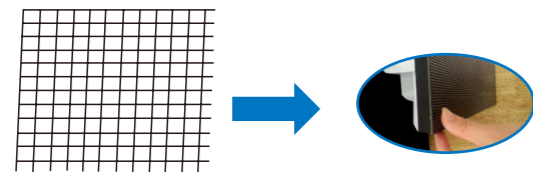
4 FRONT SERVICE DESIGN

Every module can be replaced from front, faster maintenance, more accurate and save much time.



5 BUCKLE TYPE MASK DESIGN

Take a modular buckle type design for mask. It greatly enhance the smoothness of the mask and display effect.



6 LOW BRIGHTNESS WITH HIGH GREY SCALE EFFICIENCY



Clear shadow texture



Fuzzy shadow texture

03

PRODUCTS SPECIFICATIONS

Type	DTV-121	DTV-151	DA-181	DA-251
Pixel Pitch	1.25mm	1.56mm	1.875mm	2.5mm
Physical Density (pixel/m ²)	640000	410913	284444	160000
LED Sources	SMD0808	SMD1010		SMD2020
Working Environment	indoor			
Module Resolution(Dots)	120x135	96x108	128x128	96x96
Module Size(mm)	150x168.75		240x240	
Module WorkingVoltage	5V			
Cabinet Resolution(Dots)	480x281	384x216	256x256	192x192
Cabinet Size(mm)	600x337.5		480x480	
Material	Die-casting Aluminum			
Gross Weight	8 Kg		8.5 Kg	
Max Power Consumption(W/m ²)	900	800	500	560
Ave Power Consumption(W/m ²)	350	300	200	240
Input Consumption(W/m ²)	1000	900	600	700
Brightness(nits)	800			
Color Temperature(K)	9000-15000K			
Contrast	3000:1			
Grey Scale	16bit			
View Distance(m)	≥1.2 m	≥1.5 m	≥1.8 m	≥2.5 m
View Angle(°)	H:160/V:160			
Drive Mode(Scanning)	24	27	32	32
Refreshment(Hz)	≥1920HZ			
Frame Frequency(Hz)	≥60HZ			
Protection Grade	IP31			
Operating Life	>100000 hours			



LED LIGHTING FIXTURE

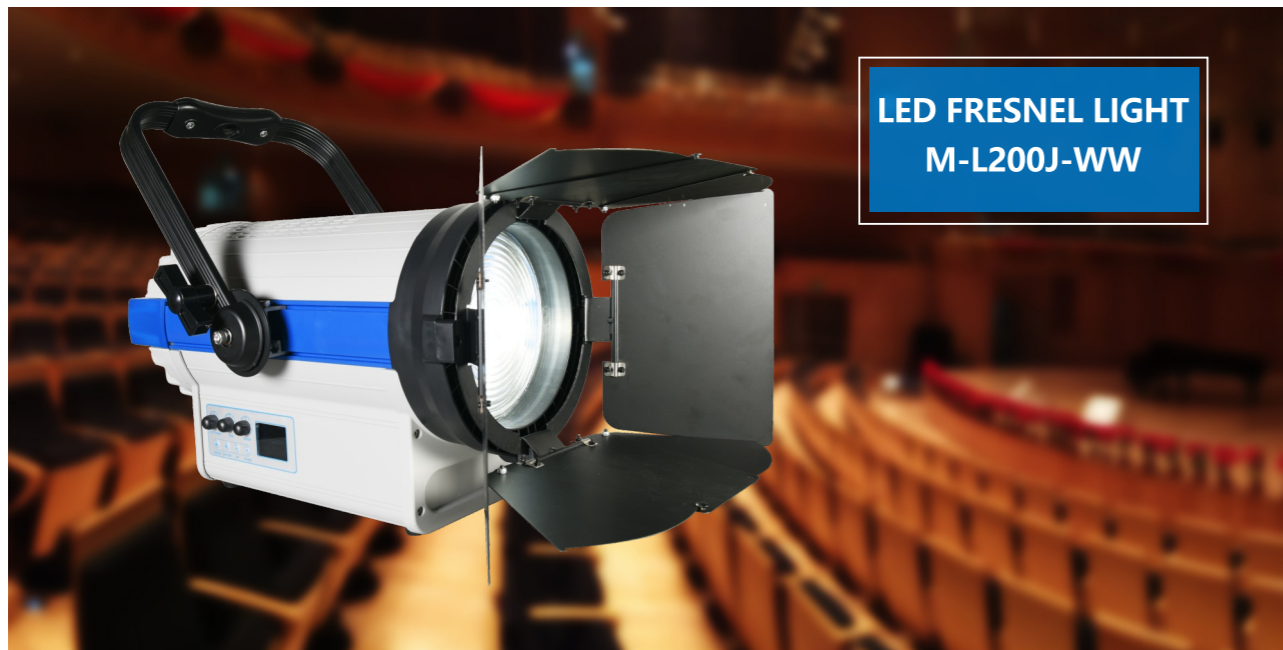
LED FRESNEL LIGHT

LED ELLIPSOIDAL LIGHT

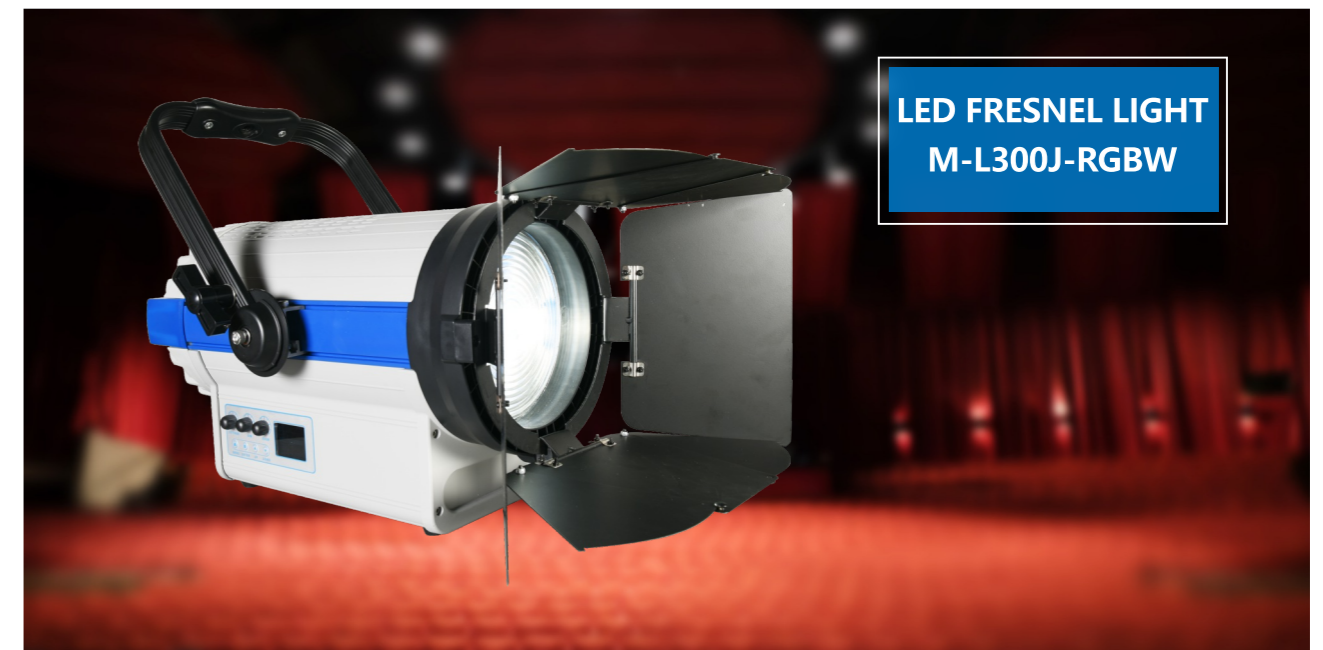
LED SOFT PANEL LIGHT

LED PAR LIGHT

MOVING HEAD LIGHT



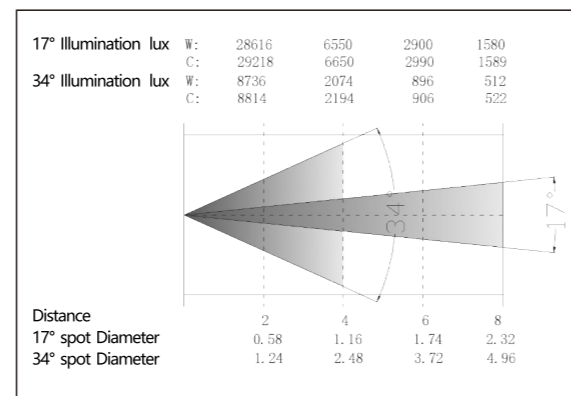
LED FRESNEL LIGHT
M-L200J-WW



LED FRESNEL LIGHT
M-L300J-RGBW

PRODUCTS FEATURE

1. Light source: 1pc 400W Bi-color LED module
2. Knob-style dimmer, knob-style zoom
3. LCD display window, convenient operation
4. 8pcs barn door, 360 degrees rotation
5. Rail-mounted adjustment
6. High Color Rendering Index, High luminous efficacy
7. Excellent white light output, uniform facular, no halo
8. Built-in 4 dimmer curves: 0-100% dimmer, S-Gamma, Linear, L-Gamma, B-Gamma, could be customized according to buyer' s requirements

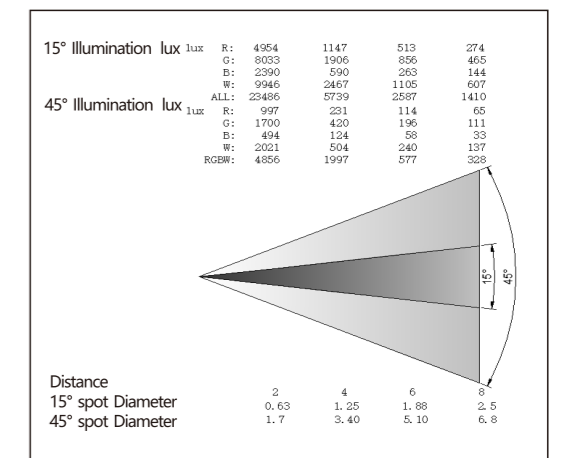


TECHNICAL PARAMETERS

Electric parameter		Optical parameter		Mechanical and physical parameters	
Power Supply	AC100-240V 50/60Hz	Light Source	400W LED	Shell Material	Die Casting Aluminum
Power Consumption	≤200W	Color (light source)	3200K-5600K adjustable	Protection Grade	IP20
Control Signal	DMX512	Beam Angle	17°- 34°	Working Temperature	-20 ~ 40°C
Control Channel	5CH	Illumination Intensity	1580 Lux @8m 17° 512 Lux@8m 34°	Net weight	11.5kg
DMX input/output	XRL3PIN (In&Out)	Dimmer	0-100%	Dimension	680.5X379.2X505mm
Power Interface	Aviation head	Strobe color Rendering Index	0-20Hz ≥95	Application	Theater, TV Studio, Multi-function room, etc.

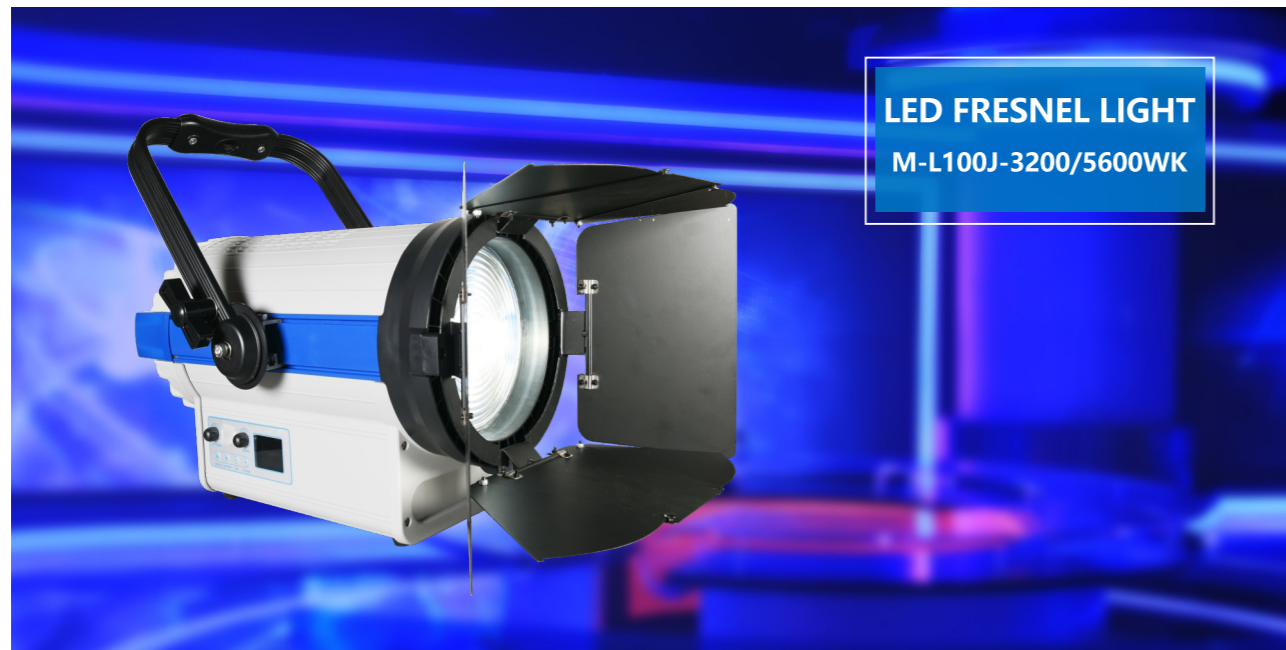
PRODUCTS FEATURE

1. Light source: 1pc 400W RGBW colors LED module
2. Knob-style dimming, knob-style focusing
3. LCD display window, convenient operation
4. 8 pcs barn door, 360 degrees rotation
5. Rail-mounted adjustment
6. High color rendering index, high luminous efficacy
7. Excellent white light output, uniform facular, no halo
8. Built-in 4 dimmer curves: 0-100% dimmer, S-Gamma, Linear, L-Gamma, B-Gamma, could be customized according to buyer' s requirements

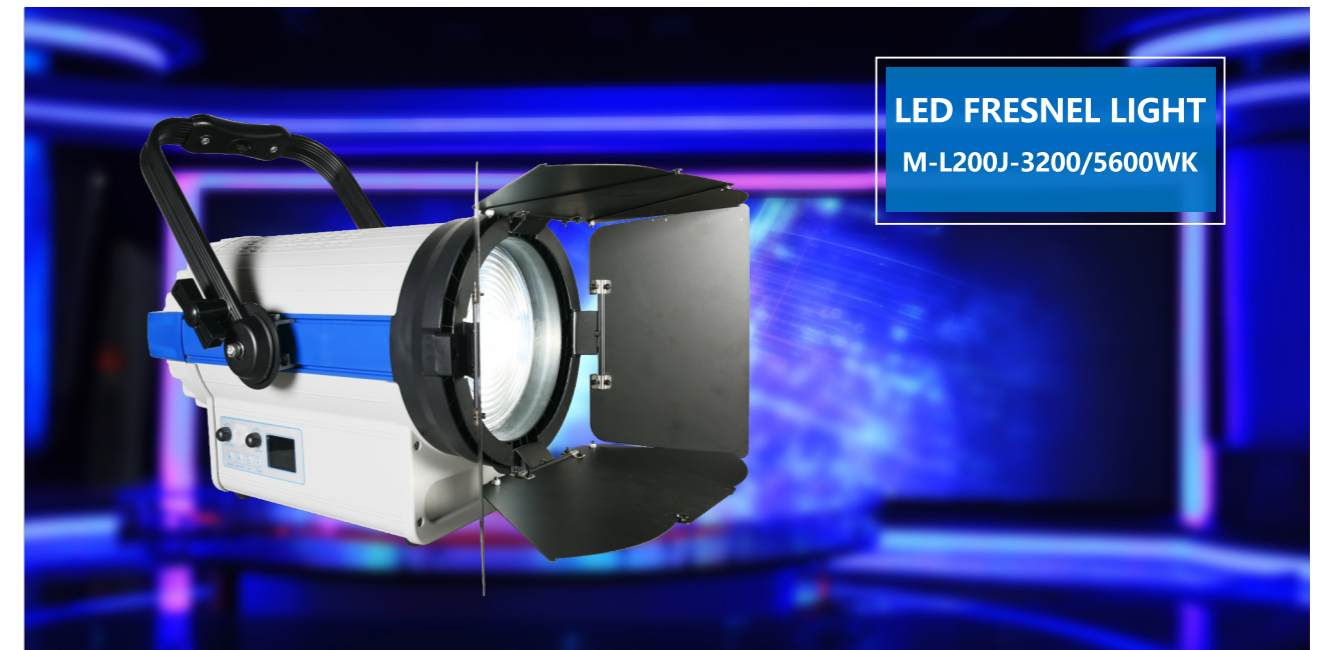


TECHNICAL PARAMETERS

Electric parameter		Optical parameter		Mechanical and physical parameters	
Power Supply	AC100-240V 50/60Hz	Light Source	400W LED	Shell Material	Die Casting Aluminum
Power Consumption	≤300W	Color (light source)	RGBW	Protection Grade	IP20
Control Signal	DMX512	Beam Angle	15°- 45°	Working Temperature	-20 ~ 40°C
Control Channel	16CH	Illumination Intensity	1410 LUX/8m,15° 328 LUX/8m,45°	Net weight	11.5kg
DMX input/output	XRL3PIN (In&Out)	Dimmer	0-100%	Dimension	680.5X379.2X505mm
Power Interface	Aviation head	Strobe	0-20Hz	Application	Theater, TV Studio, Multi-function room, etc.



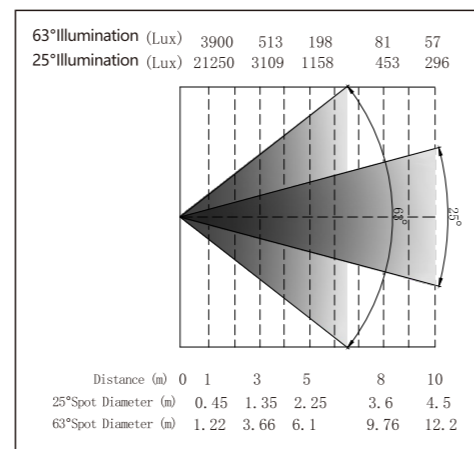
LED FRESNEL LIGHT
M-L100J-3200/5600WK



LED FRESNEL LIGHT
M-L200J-3200/5600WK

PRODUCTS FEATURE

- 1.Knob-style dimming, knob-style focusing
- 2.LCD display window, convenient operation
- 3.8 pcs barn door, 360 degrees rotation
- 4.Rail-mounted adjustment
- 5.High color rendering index, high luminous efficacy
- 6.Excellent white light output, uniform facular, no halo
- 7.Autonomous micro-light control technology, 0-100% dimming, and four kinds of dimming curves such as: S-Gamma, Linear, L-Gamma, B-Gamma, could be customized
- 8.Mute design



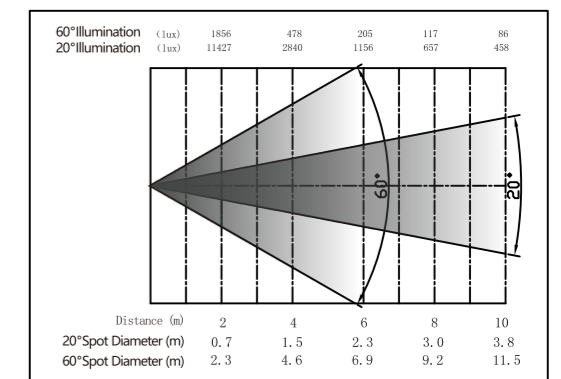
3200K

TECHNICAL PARAMETERS

Electric parameter		Optical parameter		Mechanical and physical parameters	
Power Supply	AC100-240V 50/60Hz	Light Source	COB 100W	Shell Material	Aluminum/plastic
Power Consumption	100W	Color (light source)	White	Protection Grade	IP20
Control Signal	DMX512	Color Temperature	3200K/5600K (optional)	Working Temperature	-20 ~ 40°C
Control Channel	4CH	ColorRendering Index	≥95	Net weight	9.5kg
DMX input/output	XRL3PIN (In&Out)	Beam Angle	25°- 63°	Dimension	620.6×379.2×475mm
Power Interface	Aviation head	Illumination Intensity	1158 LUX/5m, 25°	Application	Theater, TV Studio, Multi-function room, etc.
		Dimmer	0-100%		
		Strobe	0-20Hz		

PRODUCTS FEATURE

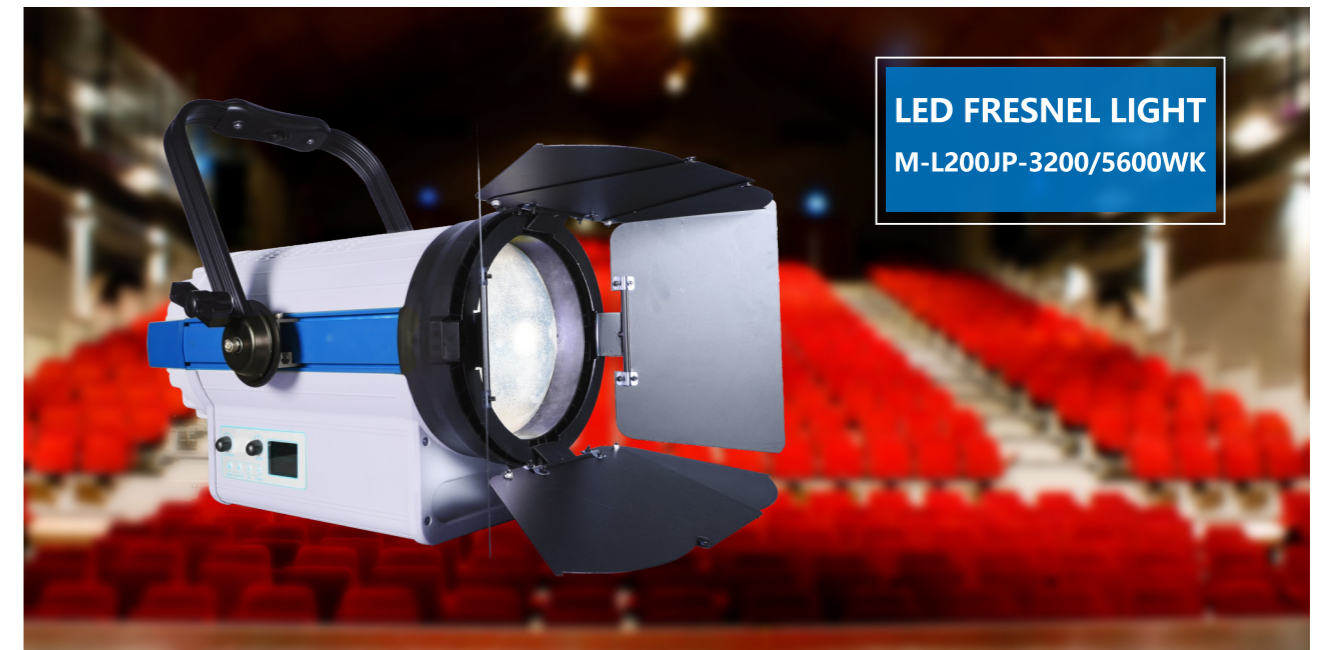
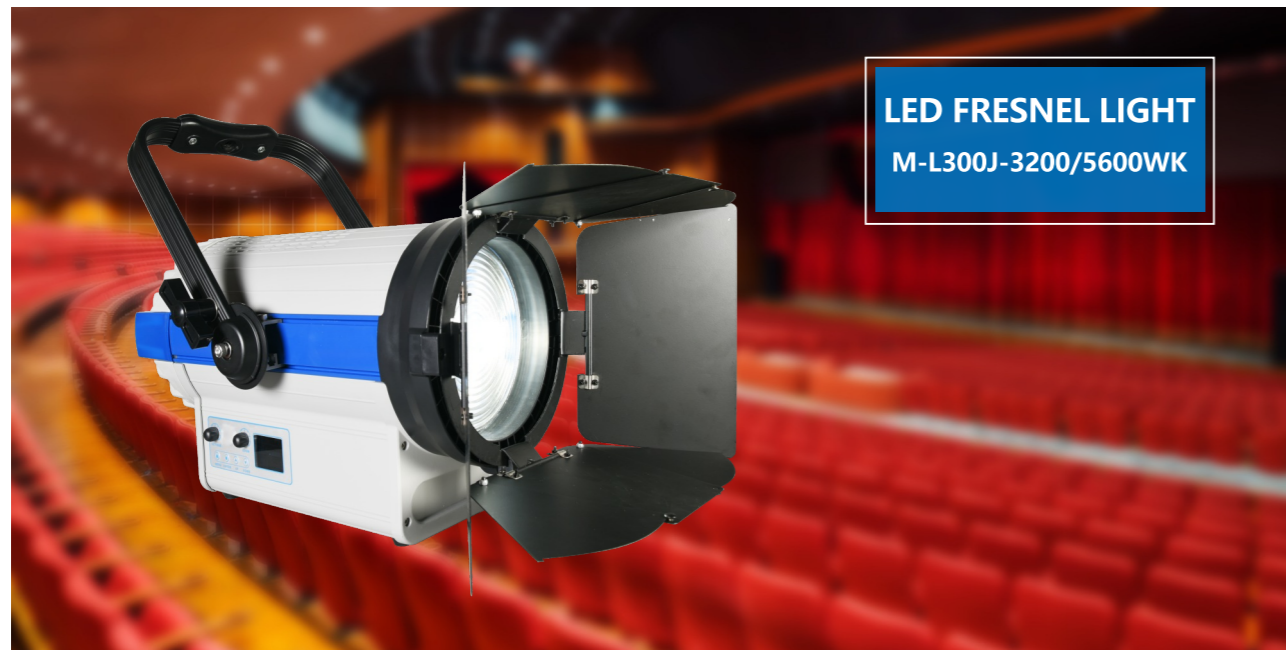
- 1.Knob-style dimming, knob-style focusing
- 2.LCD display window, convenient operation
- 3.8 pcs barn door, 360 degrees rotation
- 4.Rail-mounted adjustment
- 5.High color rendering index, high luminous efficacy
- 6.Excellent white light output, uniform facular, no halo
- 7.Autonomous micro-light control technology, 0-100% dimming, and four kinds of dimming curves such as: S-Gamma, Linear,L-Gamma, B-Gamma, could be customized



3200K

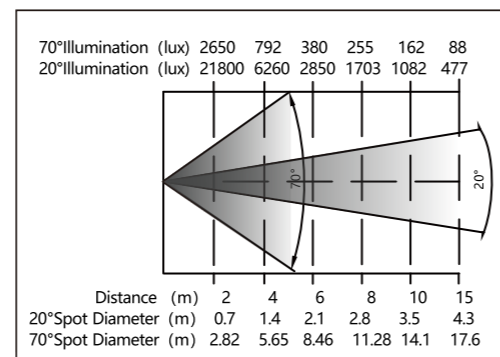
TECHNICAL PARAMETERS

Electric parameter		Optical parameter		Mechanical and physical parameters	
Power Supply	AC100-240V 50/60Hz	Light Source	COB 200W	Shell Material	Aluminum/plastic
Power Consumption	200W	Color (light source)	White	Protection Grade	IP20
Control Signal	DMX512	Color Temperature	3200K/5600K(optional)	Working Temperature	-20 ~ 40°C
Control Channel	4CH	ColorRendering Index	≥95	Net weight	9.5kg
DMX input/output	XRL3PIN (In&Out)	Beam Angle	20°- 60°	Dimension	620.6×379.2×475mm
Power Interface	Aviation head	Illumination Intensity	834 LUX/8m,20°/5600K	Application	Theater, TV Studio, Multi-function room, etc.
		Dimmer	0-100%		
		Strobe	0-20Hz		



PRODUCTS FEATURE

- 1.Knob-style dimming, knob-style focusing
- 2.LCD display window, convenient operation
- 3.8 pcs barn door, 360 degrees rotation
- 4.Rail-mounted adjustment
- 5.High color rendering index, high luminous efficacy
- 6.Excellent white light output, uniform facular, no halo
- 7.Autonomous micro-light control technology, 0-100% dimming,and four kinds of dimming curves such as: S-Gamma, Linear, L-Gamma, B-Gamma, could be customized



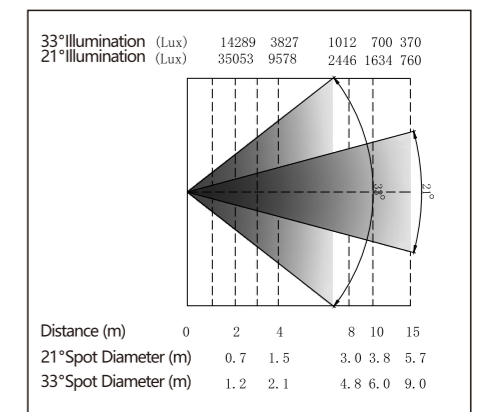
3200K

TECHNICAL PARAMETERS

Electric parameter		Optical parameter		Mechanical and physical parameters	
Power Supply	AC100-240V 50/60Hz	Light Source	COB 300W	Shell Material	Aluminum/plastic
Power Consumption	300W	Color (light source)	White	Protection Grade	IP20
Control Signal	DMX512	Color Temperature	3200K/5600K (optional)	Working Temperature	-20 ~ 40°C
Control Channel	4CH	ColorRendering Index	≥95	Net weight	9.5kg
DMX input/output	XRL3PIN (In&Out)	Beam Angle	20°- 70°	Dimension	620.6×379.2×475mm
Power Interface	Aviation head	Illumination Intensity	1502 LUX/10m, 20°/5600K	Application	Theater, TV Studio, Multi-function room, etc.
		Dimmer	0-100%		
		Strobe	0-20Hz		

PRODUCTS FEATURE

- 1.Knob-style dimming, knob-style focusing
- 2.LCD display window, convenient operation
- 3.8 pcs barn door, 360 degrees rotation
- 4.Rail-mounted adjustment
- 5.High color rendering index, high luminous efficacy
- 6.Excellent white light output, uniform facular, no halo
- 7.Autonomous micro-light control technology, 0-100% dimming, and four kinds of dimming curves such as: S-Gamma, Linear, L-Gamma, B-Gamma, could be customized



3200K

TECHNICAL PARAMETERS

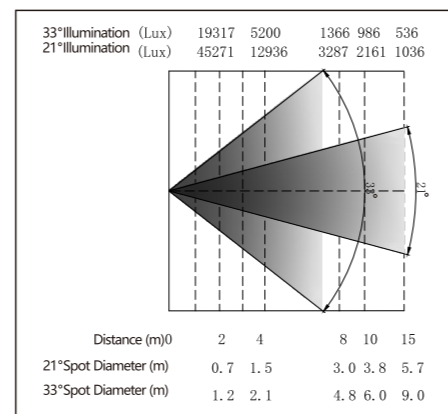
Electric parameter		Optical parameter		Mechanical and physical parameters	
Power Supply	AC100-240V 50/60Hz	Light Source	COB 200W	Shell Material	Aluminum/plastic
Power Consumption	200W	Color (light source)	White	Protection Grade	IP20
Control Signal	DMX512	Color Temperature	3200K/5600K (optional)	Working Temperature	-20 ~ 40°C
Control Channel	4CH	ColorRendering Index	≥95	Net weight	11.5kg
DMX input/output	XRL3PIN (In&Out)	Beam Angle	21°- 33°	Dimension	680.5X379.2X505mm
Power Interface	Aviation head	Illumination Intensity	836 LUX/15m,21°/5600K	Application	Theater, TV Studio, Multi-function room, etc.
		Dimmer	0-100%		
		Strobe	0-20Hz		



LED FRESNEL LIGHT
M-L300JP-3200/5600WK

PRODUCTS FEATURE

- 1.Knob-style dimming, knob-style focusing
- 2.LCD display window, convenient operation
- 3.8 pcs barn door, 360 degrees rotation
- 4.Rail-mounted adjustment
- 5.High color rendering index, high luminous efficacy
- 6.Excellent white light output, uniform facular, no halo
- 7.Autonomous micro-light control technology, 0-100% dimming, and four kinds of dimming curves such as: S-Gamma, Linear, L-Gamma, B-Gamma, could be customized



3200K

TECHNICAL PARAMETERS

Electric parameter		Optical parameter		Mechanical and physical parameters	
Power Supply	AC100-240V 50/60Hz	Light Source	COB 300W	Shell Material	Aluminum/plastic
Power Consumption	300W	Color (light source)	White	Protection Grade	IP20
Control Signal	DMX512	Color Temperature	3200K/5600K (optional)	Working Temperature	-20 ~ 40°C
Control Channel	4CH	Color Rendering Index	≥95	Net weight	11.5kg
DMX input/output	XRL3PIN (In&Out)	Beam Angle	21°- 33°	Dimension	680.5X379.2X505mm
Power Interface	Aviation head	Illumination Intensity	1140 LUX/15m, 21°/5600K	Application	Theater, TV Studio, Multi-function room, etc.
		Dimmer	0-100%		
		Strobe	0-20Hz		



△ Dance drama show "Excellent Dan zhai"



△ Changsha Broadcasting and TV studio

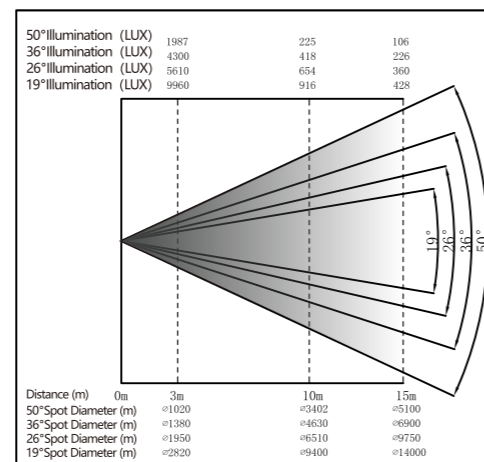


△ Changde Old Ximen Theater



PRODUCTS FEATURE

- 1.Adopt high rendering index COB light source , high-level combinati on optical system
- 2.Excellent focusing imaging performance , projection design clarity, cutting deformation, small light blue edge ,light evenly
- 3.Four internal dimmer curve, S-Gamma, Linear, L-Gamma, B-Gamma , 0-100% smooth dimming
- 4.Visual display window , humanized control interface
- 5.Intelligent temperature protection function
- 6.High photosynthetic efficiency, low noise ,long life



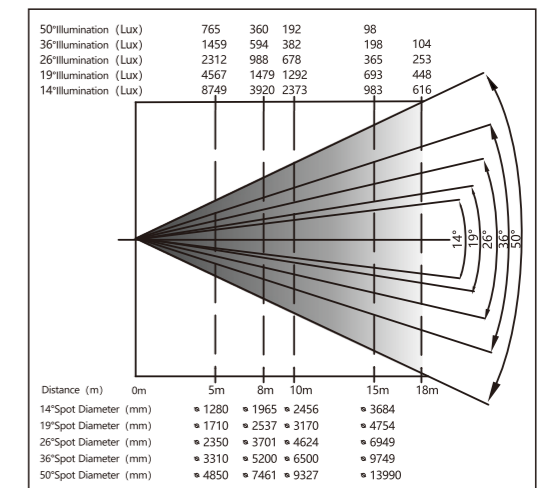
3200K

TECHNICAL PARAMETERS

Electric parameter		Optical parameter		Mechanical and physical parameters	
Input Voltage	AC100-240V 50/60Hz	Light Source	COB 200W	Case Material	Die casting aluminum/plastic
Power Consumption	200W	Color (light source)	White	Protection Grade	IP20
Control Signal	DMX512	Color Temperature	3200K/5600K (optional)	Working Temperature	-20 ~ 40°C
Control Channel	4CH	Color Rendering Index	≥90	Net weight	10kg
DMX input/output	XRL3PIN (In&Out)	Beam Angle	5°/10°/14°/19°/26°/36°/50°	Dimension	645×314×495mm
Power Interface	Aviation head	Illumination Intensity	1176LUX/10m,19°	Application	Theater, TV Studio,stage etc
		Dimmer	0-100%		
		Strobe	0-20Hz		
		Luminous flux	8000LM		

PRODUCTS FEATURE

- 1.300W high power COB light source ,High luminous flux rate optical lens combination
- 2.Highly consistent color rendering
- 3.The projection imaging/clear
- 4.No optical deformation
- 5.Four internal dimmer curve, S-Gamma, Linear, L-Gamma, B-Gamma, 0-100% smooth dimming
6. 2.4inch color display, the big wheel rotation dimmer
- 7.Ultra-low noise design



3200K

TECHNICAL PARAMETERS

Electric parameter		Optical parameter		Mechanical and physical parameters	
Input Voltage	AC100-240V 50/60Hz	Light Source	COB 300W	Case Material	Die casting aluminum/plastic
Power Consumption	320W	Color (light source)	White	Protection Grade	IP20
Control Signal	DMX512 M/S	Color Temperature	3200K/5600K (optional)	Working Temperature	-20 ~ 40°C
Control Channel	4CH	Color Rendering Index	≥90	Net weight	11.5kg
DMX input/output	XRL3/5-PIN (In&Out)	Beam Angle	5°/10°/14°/19°/26°/36°/50°	Dimension	837×285×525mm (14°) 768×285×525mm (others)
Power Interface	Aviation head	Illumination Intensity	2373LUX/10m,14°	Application	Theater, TV Studio,stage etc
Internet connect	Optional	Dimmer	0-100%		
Display Window	2.4 inch color LCD display	Strobe	0-20Hz		
		Luminous flux	19000LM		

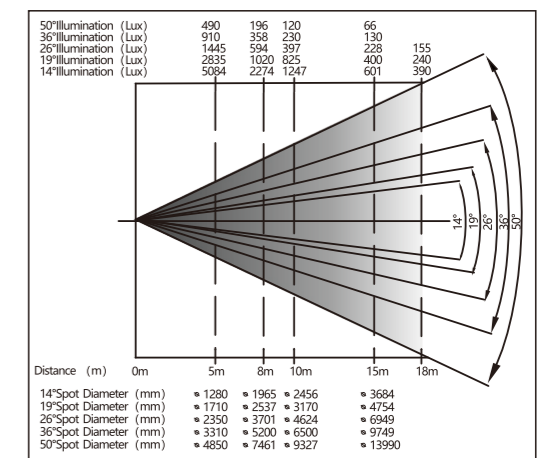
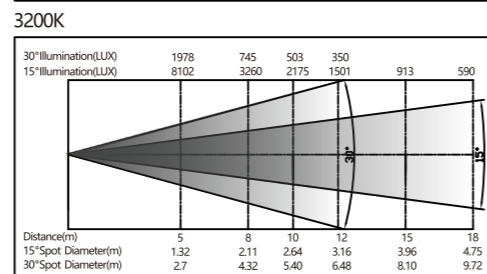
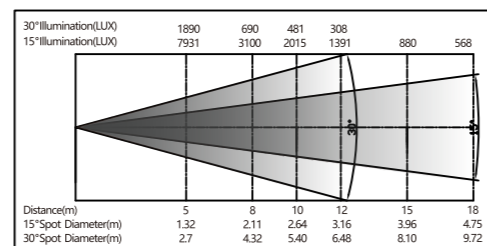


PRODUCTS FEATURE

- 1.300W high power COB light source ,High luminous flux rate optical lens combination
- 2.Highly consistent color rendering
- 3.The projection imaging/clear
- 4.No optical deformation
- 5.Four internal dimmer curve, S-Gamma, Linear, L-Gamma, B-Gamma ,0-100% smooth dimming
- 6.2.4inch color display, the big wheel rotation dimmer
- 7.Ultra-low noise design

PRODUCTS FEATURE

- 1.300W high power COB light source ,High luminous flux rate optical lens combination
- 2.Highly consistent color rendering
- 3.The projection imaging/clear
- 4.No optical deformation
- 5.Four internal dimmer curve, S-Gamma, Linear, L-Gamma, B-Gamma ,0-100% smooth dimming;
- 6.2.4inch color display, the big wheel rotation dimmer
- 7.Ultra-low noise design



TECHNICAL PARAMETERS

TECHNICAL PARAMETERS

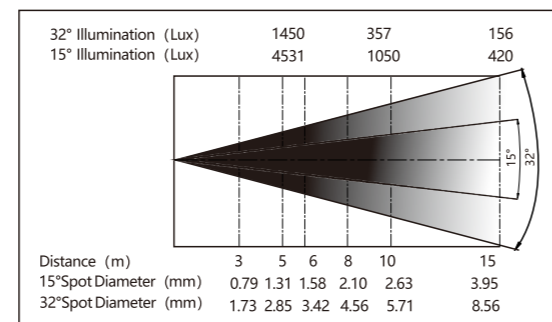
Electric parameter		Optical parameter		Mechanical and physical parameters	
Input Voltage	AC100-240V 50/60Hz	Light Source	COB 300W	Case Material	Die casting aluminum/plastic
Power Consumption	320W	Color (light source)	White	Protection Grade	IP20
Control Signal	DMX512 M/S	Color Temperature	3200K/5600K(optional)	Working Temperature	-20 ~ 40°C
Control Channel	3CH	Color Rendering Index	≥90	Net weight	13kg
DMX input/output	XRL3/5-PIN (In&Out)	Beam Angle	15°-30°/25°-50°	Dimension	917×294×525mm (1530) 637×294×525mm (2550)
Display Window	2.4 inch color LCD display	Illumination Intensity	913LUX/15m,15°(1530) 965LUX/8m,25°(2550)	Application	Theater, TV Studio,stage etc
Power Interface	Aviation head	Dimmer	0-100%		
		Strobe	0-20Hz		
		Luminous flux	19000LM		

Electric parameter		Optical parameter		Mechanical and physical parameters	
Input Voltage	AC100-240V 50/60Hz	Light Source	COB 300W	Case Material	Die casting aluminum/plastic
Power Consumption	320W	Color (light source)	White	Protection Grade	IP20
Control Signal	DMX512 M/S	Color Temperature	3200K/5600K (optional)	Working Temperature	-20 ~ 40°C
Control Channel	4CH	Color Rendering Index	≥95	Net weight	11.5kg
DMX input/output	XRL3/5-PIN (In&Out)	Beam Angle	5°/10°/14°/19°/26°/36°/50°	Dimension	837×285×525mm (14°) 768×285×525mm (others)
Power Interface	Aviation head	Illumination Intensity	2274LUX/8m,14°	Application	Theater, TV Studio,stage etc
Internet connect	Optional	Dimmer	0-100%		
Display Window	2.4 inch color LCD display	Strobe	0-20Hz		
		Luminous flux	19000LM		



PRODUCTS FEATURE

- 1.300W high power COB light source ,High luminous flux rate optical lens combination
- 2.Highly consistent color rendering
- 3.The projection imaging/clear
- 4.No optical deformation
- 5.Four internal dimmer curve, S-Gamma, Linear, L-Gamma, B-Gamma ,0-100% smooth dimming;
- 6.2.4inch color display, the big wheel rotation dimmer
- 7.Ultra-low noise design

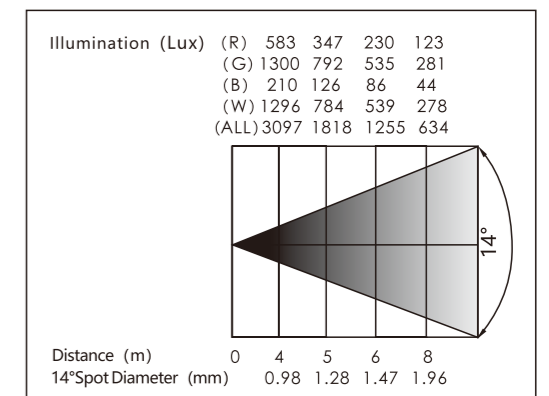


TECHNICAL PARAMETERS

Electric parameter		Optical parameter		Mechanical and physical parameters	
Input Voltage	AC100-240V 50/60Hz	Light Source	COB 300W	Case Material	Die casting aluminum/plastic
Power Consumption	320W	Color (light source)	White	Protection Grade	IP20
Control Signal	DMX512 M/S	Color Temperature	3200K/5600K (optional)	Working Temperature	-20 ~ 40°C
Control Channel	4CH	Color Rendering Index	≥95	Net weight	13kg
DMX input/output	XRL3/5-PIN (In&Out)	Beam Angle	15°-30°/25°-50°	Dimension	917×294×525mm (1530) 637×294×525mm (2550)
Power Interface	Aviation head	Illumination Intensity	420LUX/15m,15°(1530)	Application	Theater, TV Studio,stage etc
Internet connect	Optional	Dimmer	0-100%		
Display Window	2.4 inch color LCD display	Strobe	0-20Hz		
		Luminous flux	19000LM		

PRODUCTS FEATURE

- 1.300W high power COB light source ,High luminous flux rate optical lens combination
- 2.Highly consistent color rendering
- 3.The projection imaging/clear
- 4.No optical deformation
- 5.Four internal dimmer curve, S-Gamma, Linear, L-Gamma, B-Gamma ,0-100% smooth dimming
- 6.2.4inch color display, the big wheel rotation dimmer
- 7.Ultra-low mute design



TECHNICAL PARAMETERS

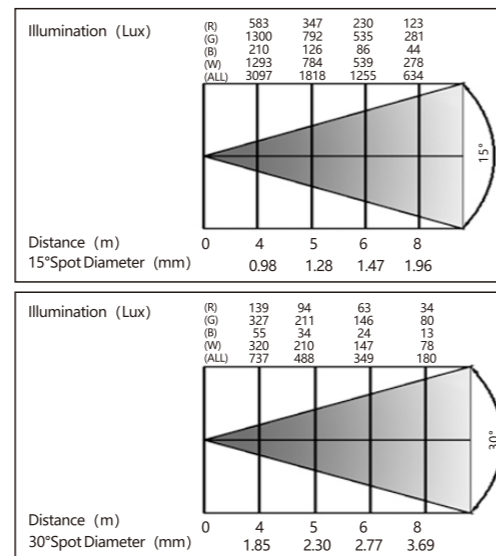
Electric parameter		Optical parameter		Mechanical and physical parameters	
Input Voltage	AC100-240V 50/60Hz	Light Source	COB 250W	Case Material	Die casting aluminum/plastic
Power Consumption	250W	Color (light source)	RGBW	Protection Grade	IP20
Control Signal	DMX512 M/S	Color Temperature	2000K/8000K(optional)	Working Temperature	-20 ~ 40°C
Control Channel	15CH	Beam Angle	5°/10°/14°/19°/26°/36°/50°	Net weight	11.5kg
DMX input/output	XRL3/5-PIN (In&Out)	Illumination Intensity	634LUX/8m,14°	Dimension	837×285×525mm (14°) 768×285×525mm (others)
Power Interface	Aviation head	Dimmer	0-100%	Application	Theater, TV Studio,stage etc
Internet connect	Optional	Strobe	0-20Hz		
Display Window	2.4 inch color LCD display	Luminous flux	13000LM		



LED ELLIPSOIDAL LIGHT
M-L300CX-RGBW
15°-30°/25°-50°

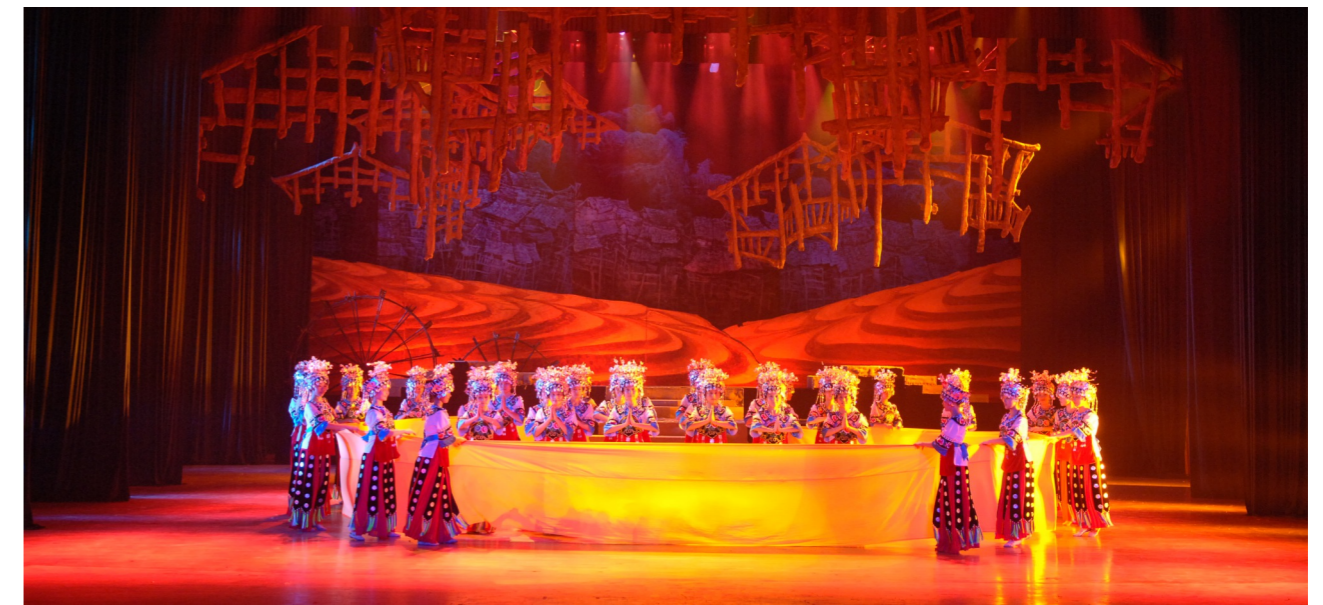
PRODUCTS FEATURE

- 1.300W high power COB light source ,High luminous flux rate optical lens combination
- 2.Highly consistent color rendering
- 3.The projection imaging/clear
- 4.No optical deformation
- 5.Four internal dimmer curve, S-Gamma, Linear, L-Gamma, B-Gamma ,0-100% smooth dimming
- 6.2.4inch color display, the big wheel rotation dimmer
- 7.Ultra-low mute design



TECHNICAL PARAMETERS

Electric parameter		Optical parameter		Mechanical and physical parameters	
Input Voltage	AC100-240V 50/60Hz	Light Source	COB 250W	Case Material	Die casting aluminum/plastic
Power Consumption	250W	Color (light source)	RGBW	Protection Grade	IP20
Control Signal	DMX512 M/S	Color Temperature	2000K/8000K (optional)	Working Temperature	-20 ~ 40°C
Control Channel	15CH	Beam Angle	15°-30°/25°-50°	Net weight	13 kg
DMX input/output	XRL3/5-PIN (In&Out)	Illumination Intensity	620LUX/8m,15°(1530)	Dimension	917×294×525mm (1530) 637×294×525mm (2550)
Power Interface	Aviation head	Dimmer	0-100%	Application	Theater, TV Studio,stage etc
Internet connect	Optional	Strobe	0-20Hz		
Display Window	2.4 inch color LCD display	Luminous flux	13000LM		



△ Hunan grand theatre



△ Chang De broadcasting and TV studio



△ Hunan Arts School





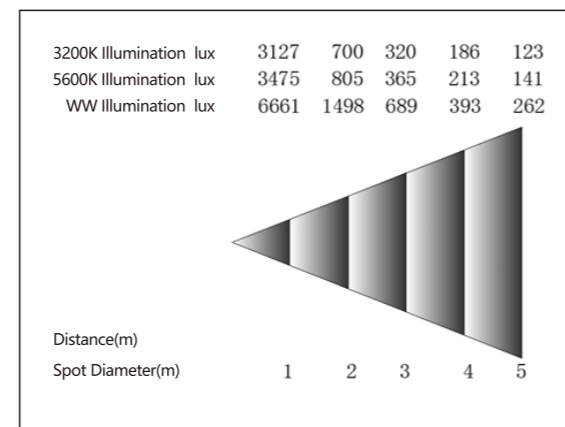
LED SOFT PANEL LIGHT
M-L280PR-WW(DX)



LED SOFT PANEL LIGHT
M-L100PR-3200W/5600W/WW

PRODUCTS FEATURE

- 1.0-100% smooth dimming, four kinds of dimming curves such as: S-Gamma, Linear, L-Gamma, B-Gamma, could be customized.
- 2.adjustable color temperature, High consistent color temperature
- 3.High luminous efficiency, long life
- 4.Uniform spot

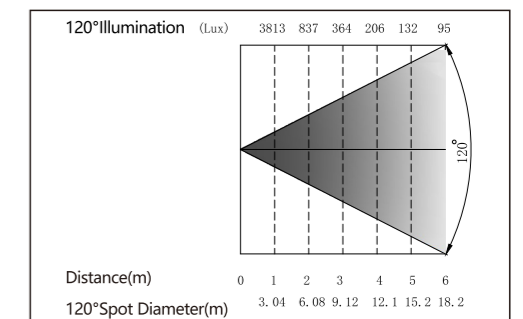


TECHNICAL PARAMETERS

Electric parameter		Optical parameter		Mechanical and physical parameters	
Input Voltage	AC100-240V 50/60Hz	Light Source	576pcs 0.5W LED	Case Material	Aluminum
Power Consumption	≤280W	Color (light source)	White	Protection Grade	IP20
Control Signal	DMX512 M/S	Color Temperature	3200-5600K adjustable	Working Temperature	-20 ~ 40°C
Control Channel	3/8	Color Rendering Index	≥96	Net weight	15kg
DMX input/output	3PIN XLR Connector	Beam Angle	120°(90°)	Rotation angle	0°~45°
Power Interface	3PIN	Illumination Intensity	400LUX/4m	Dimension	586×580×135mm
		Dimmer	0-100%	Decorative ceiling opening size	600×600mm
		Strobe	0-20Hz	Application	Studio, Meeting room, Multifunction room

PRODUCTS FEATURE

- 1.Good color rendering index
- 2.Uniform spot
- 3.High consistent color temperature
- 4.Smooth dimming, four kinds of dimming curves such as: S-Gamma, Linear, L-Gamma, B-Gamma, could be customized
- 5.No brightness output loss during the color temperature adjusting
- 6.Natural cooling, mute design



3200K

TECHNICAL PARAMETERS

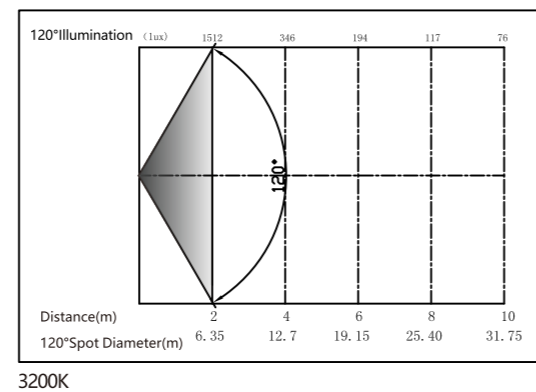
Electric parameter		Optical parameter		Mechanical and physical parameters	
Input Voltage	AC100-240V 50/60Hz	Light Source	0.5W LEDs 256pcs	Case Material	Aluminum/metal/plastic
Power Consumption	100W	Color Temperature	3200K/5600K	Protection Grade	IP20
Control Signal	DMX512	Color Rendering Index	Ra≥98 R9≥90	Working Temperature	-20 ~ 40°C
Control Channel	4CH	Beam Angle	120°	Net weight	8.5kg
DMX input/output	XRL3PIN (In&Out)	Illumination Intensity	176Lux/4m(3200K) 206Lux/4m(5600K)	Dimension	518×510×134mm
Power Interface	Integrated power switch	Dimmer	0-100%	Application	TV Station, Studio, Meeting Room
Display Window	2.4 inch color LCD display	Strobe	0-20Hz	Honey comb board	Optional
		Luminous flux	6000LM		

M-L100PR-WW color temperature 3200K-5600K adjustable (fixed color temperature buttons 3200K, 4000K, 5000K, 5600K)
M-L100PR-WW Light Source 0.42W LEDs 512pcs;5600K 256pc; 3200K 256pcs;



PRODUCTS FEATURE

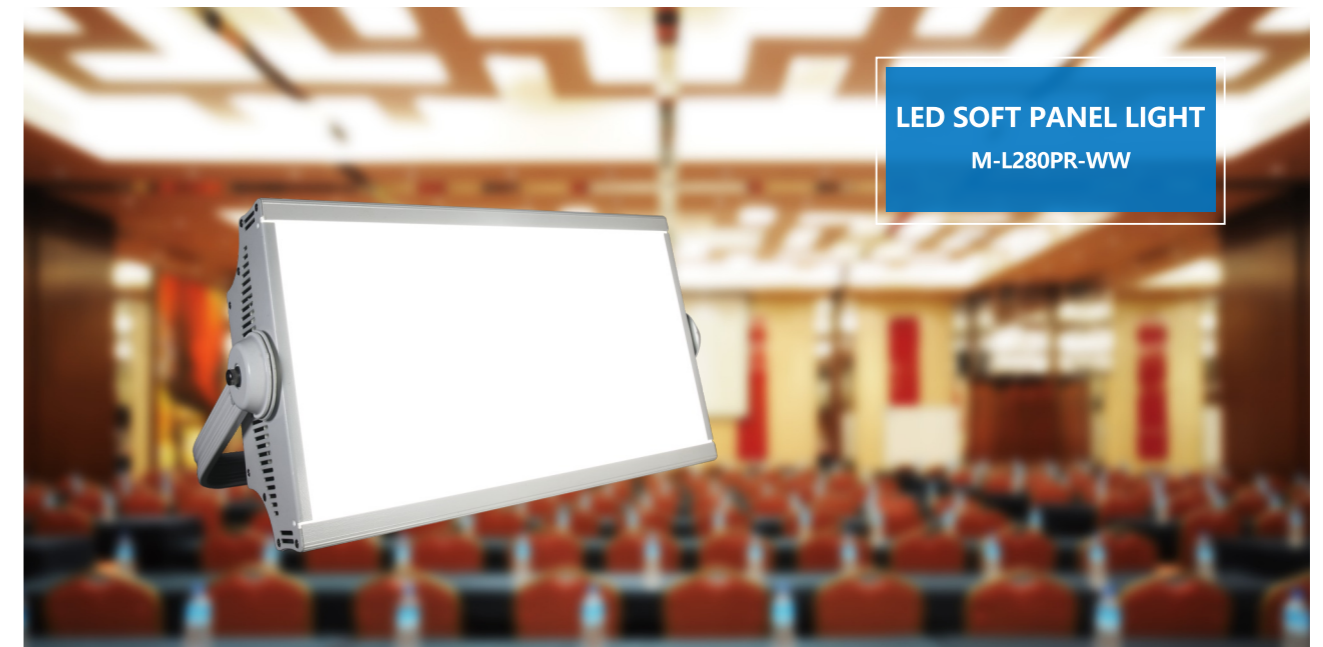
- 1.Good color rending index
- 2.Uniform spot
- 3.High consistent color temperature
- 4.Smooth dimming, four kinds of dimming curves such as: S-Gamma, Linear, L-Gamma, B-Gamma, could be customized
- 5.No brightness output loss during the color temperature adjusting
- 6.Natural cooling, mute design



TECHNICAL PARAMETERS

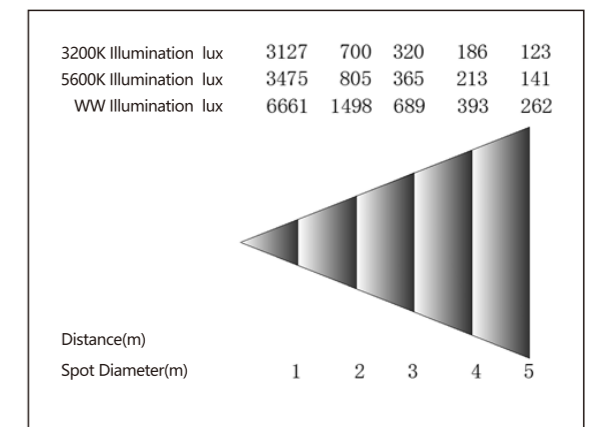
Electric parameter		Optical parameter		Mechanical and physical parameters	
Input Voltage	AC100-240V 50/60Hz	Light Source	0.5W LEDs 384pcs	Case Material	Aluminum/metal/plastic
Power Consumption	160W	Color Temperature	3200K/5600K	Protection Grade	IP20
Control Signal	DMX512	Color Rendering Index	Ra≥98 R9≥90	Working Temperature	-20 ~ 40°C
Control Channel	4CH	Beam Angle	120°	Net weight	10kg
DMX input/output	XRL3PIN (In&Out)	Illumination Intensity	332 Lux/4m(3200K) 410 Lux/4m(5600K)	Dimension	673×510×134mm
Power Interface	Integrated power switch	Dimmer	0-100%	Application	TV Station, Studio, Meeting Room
Display Window	2.4 inch color LCD display	Strobe	0-20Hz	Honey comb board	Optional
		Luminous flux	10000LM		

M-L160PR-WW color temperature 3200K-5600K adjustable (fixed color temperature buttons 3200K, 4000K, 5000K, 5600K)
M-L160PR-WW Light Source 0.5W LEDs 768pcs; 5600K 384pcs;3200K 384pcs;



PRODUCTS FEATURE

- 1.0-100% smooth dimming, four kinds of dimming curves such as: S-Gamma,Linear, L-Gamma, B-Gamma, could be customized.
- 2.adjustable color temperature, High consistent color temperature
- 3.High luminous efficiency, long life
- 4.Uniform spot



TECHNICAL PARAMETERS

Electric parameter		Optical parameter		Mechanical and physical parameters	
Input Voltage	AC100-240V 50/60Hz	Light Source	576pcs 0.5W LED	Case Material	Aluminum
Power Consumption	≤280W	Color (light source)	White	Protection Grade	IP20
Control Signal	DMX512 M/S	Color Temperature	3200-5600K adjustable	Working Temperature	-20 ~ 40°C
Control Channel	2/6	Color Rendering Index	≥96	Net weight	10kg
DMX input/output	3PIN XLR Connector	Beam Angle	120°(90°)	Dimension	583×394×117mm
Power Interface	3PIN	Illumination Intensity	400LUX/4m	Installation method	Hanging
		Dimmer	0-100%	Application	Studio, Meeting room, Multifunction room
		Strobe	0-20Hz		



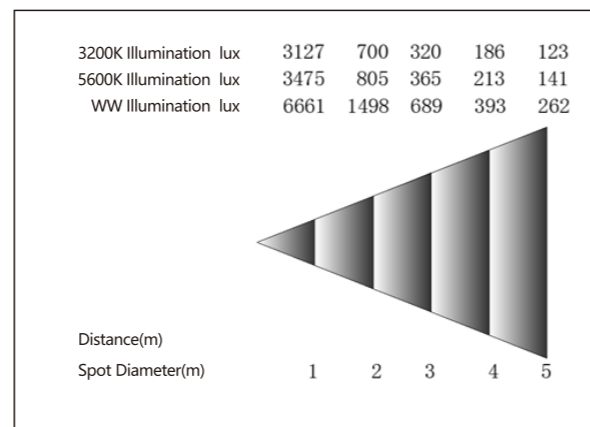
LED SOFT PANEL LIGHT
M-L280PR-WW (N)



LED SOFT PANEL LIGHT
M-L324PR-RGBW

PRODUCTS FEATURE

- 1.0-100% smooth dimming, four kinds of dimming curves such as: S-Gamma, Linear, L-Gamma, B-Gamma, could be customized.
- 2.adjustable color temperature, High consistent color temperature
- 3.High luminous efficiency, long life
- 4.Uniform spot

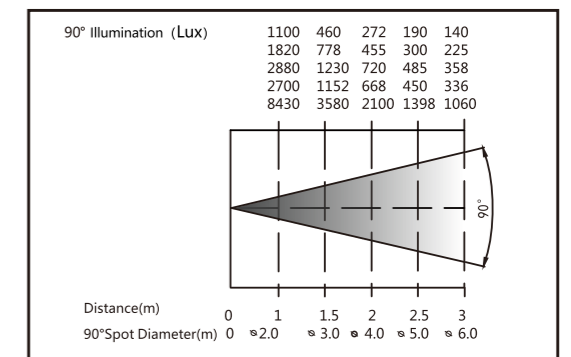


TECHNICAL PARAMETERS

Electric parameter		Optical parameter		Mechanical and physical parameters	
Input Voltage	AC100-240V 50/60Hz	Light Source	576pcs 0.5W LED	Case Material	Aluminum
Power Consumption	≤280W	Color (light source)	White	Protection Grade	IP20
Control Signal	DMX512 M/S	Color Temperature	3200-5600K adjustable	Working Temperature	-20 ~ 40°C
Control Channel	2/6	Color Rendering Index	≥96	Net weight	11.2kg
DMX input/output	3PIN XLR Connector	Beam Angle	120°(90°)	Installation method	Embedded
Power Interface	3PIN	Illumination Intensity	400LUX/4m	Dimension	543×321×119.5mm
		Dimmer	0-100%	Decorative ceiling opening size	527×305mm
		Strobe	0-20Hz	Application	Studio, Meeting room, Multifunction room

PRODUCTS FEATURE

- 1.Four internal dimmer curve, S-Gamma, Linear, L-Gamma, B-Gamma, 0-100% smooth dimming
- 2.Rich colors and good color rendition
- 3.High luminous efficiency, low glare, ultra wide angle, long life span
- 4.Soft light, comfortable visual sense



TECHNICAL PARAMETERS

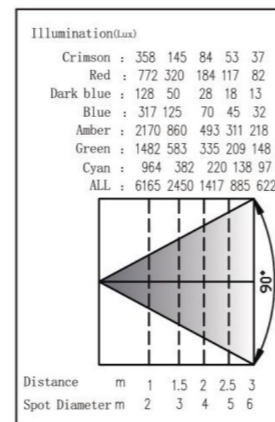
Electric parameter		Optical parameter		Mechanical and physical parameters	
Input Voltage	AC100-240V 50/60Hz	Light Source	3W LEDs 108pcs R/G/B/W27pcs	Case Material	Aluminum/metal
Power Consumption	324W	Color (light source)	RGBW	Protection Grade	IP20
Control Signal	DMX512 M/S	Color Rendering Index	≥90	Working Temperature	-20 ~ 40°C
Control Channel	4/5/6/10CH (optional)	Beam Angle	90°	Net weight	11.2kg
DMX input/output	XRL3PIN (In&Out)	Illumination Intensity	1060LUX/3m	Barn door	Optional
Power Interface	Aviation head	Dimmer	0-100%	Dimension	583×394×117mm
		Strobe	0-20Hz	Application	Conference room, multifunction hall, studio



LED SOFT PANEL LIGHT
M-L324PR-7S

PRODUCTS FEATURE

- 1. Four internal dimmer curve, S-Gamma, Linear, L-Gamma, B-Gamma, 0-100% smooth dimming
- 2. Rich colors and good color rendition
- 3. High luminous efficiency, low glare, ultra wide angle, long life span
- 4. Soft light, comfortable visual sense



TECHNICAL PARAMETERS

Electric parameter		Optical parameter		Mechanical and physical parameters	
Input Voltage	AC100-240V 50/60Hz	Light Source	3W LEDs 108pcs	Case Material	Aluminum/metal
Power Consumption	324W	Color (light source)	red,crimson,amber,green,blue,cyan,dark blue	Protection Grade	IP20
Control Signal	DMX512	Color Rendering Index	≥90	Working Temperature	-20 ~ 40°C
Control Channel	14CH	Beam Angle	90°	Net weight	11.2kg
DMX input/output	XRL3PIN (In&Out)	Illumination Intensity	1417LUX/3m	Barn door	Optional
Power Interface	Aviation head	Dimmer	0-100%	Dimension	583×394×117mm
		Strobe	0-20Hz	Application	Conference room, multifunctional hall, studio



△ Mexico TV station



△ National Defense University

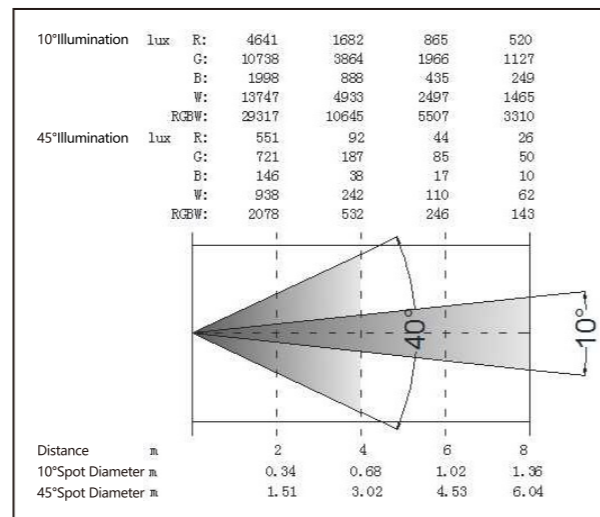


△ State Grid Hunan Electric Power Company



PRODUCTS FEATURE

- 1.High protection grade
- 2.Uniform facular, no halo effect
- 3.Rich colors and good color rendition
- 4.Built-in 4 dimmer curves: 0-100% dimmer, S-Gamma, Linear, L-Gamma, B-Gamma, could be customized according to buyer' s requirements

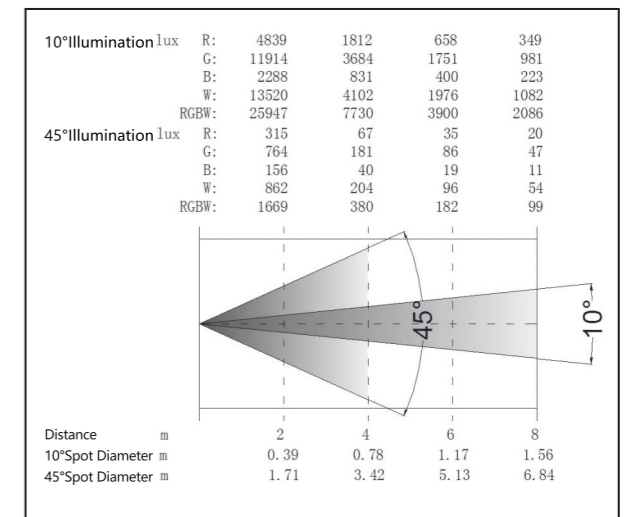


TECHNICAL PARAMETERS

Electric parameter		Optical parameter		Mechanical and physical parameters	
Input Voltage	AC100-240V 50/60Hz	Light Source	3pcs 60W LEDs OSRAM LED	Case Material	Die Casting Aluminum
Power Consumption	≤200W	Color (light source)	RGBW	Protection Grade	Ip65
Control Signal	DMX512 M/S	Beam Angle	10°-40°	Working Temperature	-10 ~ 40°C
Control Channel	9/16CH	Illumination Intensity	3310Lux /8m 10°	Net weight	13kg
DMX input/output	XLR 3PIN (In & Out)	Dimmer	0-100%	Dimension	328×254×396mm
Power Interface	Waterproof Aviation Interface	Strobe	0-20Hz	Application	Stage side light, backlight and other outdoor lightings

PRODUCTS FEATURE

- 1.High protection grade
- 2.Uniform facular, no halo effect
- 3.Rich colors and good color rendition
- 4.Built-in 4 dimmer curves: 0-100% dimmer, S-Gamma, Linear, L-Gamma, B-Gamma, could be customized according to buyer' s requirements



TECHNICAL PARAMETERS

Electric parameter		Optical parameter		Mechanical and physical parameters	
Input Voltage	AC100-240V 50/60Hz	Light Source	7PCS 30W LEDs OSRAM LED	Case Material	Die Casting Aluminum
Power Consumption	≤200W	Color (light source)	RGBW	Protection Grade	Ip65
Control Signal	DMX512 M/S	Beam Angle	10°-45°	Working Temperature	-10 ~ 40°C
Control Channel	9/16CH	Illumination Intensity	2086Lux /8m 10°	Net weight	13kg
DMX input/output	XLR 3PIN (In & Out)	Dimmer	0-100%	Dimension	328×254×396mm
Power Interface	Waterproof Aviation Interface	Strobe	0-20Hz	Application	Stage side light, backlight and other outdoor lightings



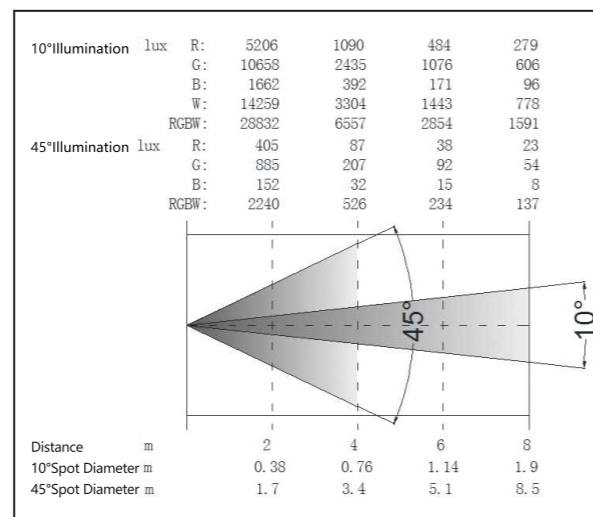
LED PAR
M-L1415T1-RGBW(4IN1)



LED PAR
M-L1915T1-RGBW(4IN1)

PRODUCTS FEATURE

- 1.High protection grade
- 2.Uniform facular, no halo effect
- 3.Rich colors and good color rendition
- 4.Built-in 4 dimmer curves: 0-100% dimmer, S-Gamma, Linear, L-Gamma, B-Gamma, could be customized according to buyer' s requirements

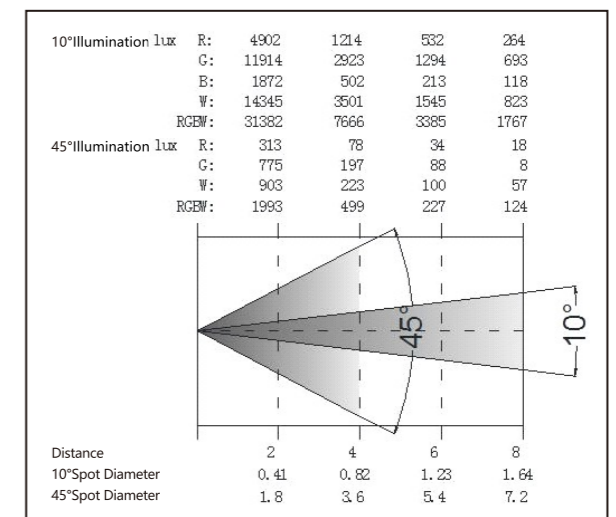


TECHNICAL PARAMETERS

Electric parameter		Optical parameter		Mechanical and physical parameters	
Input Voltage	AC100-240V 50/60Hz	Light Source	14PCS 15W LEDs OSRAM LED	Case Material	Die Casting Aluminum
Power Consumption	≤200W	Color (light source)	RGBW	Protection Grade	Ip65
Control Signal	DMX512 M/S	Beam Angle	10°-45°	Working Temperature	-10 ~ 40°C
Control Channel	9/16CH	Illumination Intensity	1591Lux /8m 10°	Net weight	13kg
DMX input/output	XLR 3PIN (In&Out)	Dimmer	0-100%	Dimension	328×254×396mm
Power Interface	Waterproof Aviation Interface	Strobe	0-20Hz	Application	Stage side light, backlight and other outdoor lightings

PRODUCTS FEATURE

- 1.High protection grade
- 2.Uniform facular, no halo effect
- 3.Rich colors and good color rendition
- 4.Built-in 4 dimmer curves: 0-100% dimmer, S-Gamma, Linear, L-Gamma, B-Gamma, could be customized according to buyer' s requirements



TECHNICAL PARAMETERS

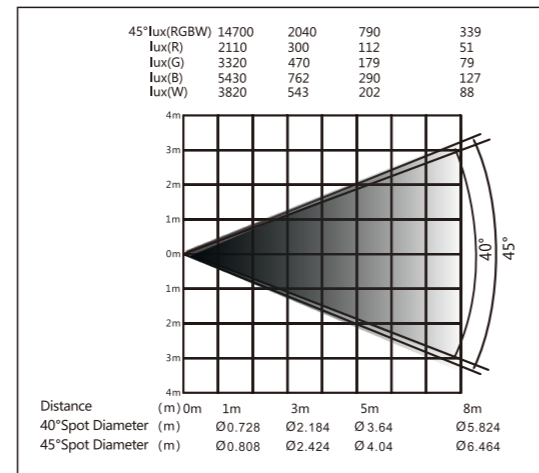
Electric parameter		Optical parameter		Mechanical and physical parameters	
Input Voltage	AC100-240V 50/60Hz	Light Source	19PCS 15W LEDs OSRAM LED	Case Material	Die Casting Aluminum
Power Consumption	≤200W	Color (light source)	RGBW	Protection Grade	Ip65
Control Signal	DMX512 M/S	Beam Angle	10°-45°	Working Temperature	-10 ~ 40°C
Control Channel	9/16CH	Illumination Intensity	1767Lux /8m 10°	Net weight	13kg
DMX input/output	XLR 3PIN (In & Out)	Dimmer	0-100%	Dimension	328×254×396mm
Power Interface	Aviation Interfave	Strobe	0-20Hz	Application	Stage side light, backlight and other outdoor lightings



LED PAR
M-L183T1-RGBW(Z)

PRODUCTS FEATURE

1. Wide range of intelligent zoom
2. High protection grade
3. Strong sense of beam
4. Uniform facular, no halo effect
5. Autonomous micro-light control technology, 0-100% dimming, and four kinds of dimming curves such as: S-Gamma, Linear, L-Gamma, B-Gamma, linear can be customized
6. Mute design



TECHNICAL PARAMETERS

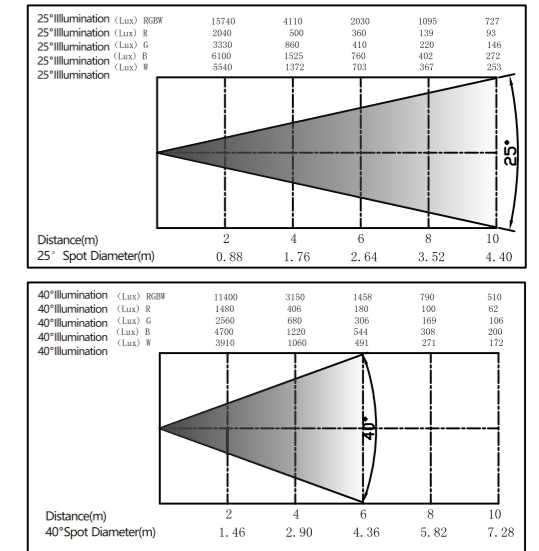
Electric parameter		Optical parameter		Mechanical and physical parameters	
Input Voltage	AC100-240V 50/60Hz	Light Source	61pcs 3W LEDs RGB 17 pcs 3W/ pcs W 10 pcs 3W/ pcs	Case Material	Die Casting Aluminum
Power Consumption	183W	Color (light source)	RGBW	Protection Grade	Ip65
Control Signal	DMX512 M/S	Beam Angle	6°-45°	Working Temperature	-20 ~ 40°C
Control Channel	4/5/6/11CH	Illumination Intensity	4620Lux /8m 6°	Net weight	8.35kg
DMX input/output	XLR 3PIN (In&Out)	Zoom Range	25° (15°、45°)	Dimension	326×253×296mm
Power Interface	Needle hole 3PIN Waterproof Interface	Strobe	0-20Hz	Application	Stage side light, backlight and other outdoor lightings



LED PAR
M-L183T1-RGBW(4IN1)

PRODUCTS FEATURE

1. High protection grade
2. Uniform facular, no halo effect
3. Rich colors and good color rendition
4. Built-in 4 dimmer curves: 0-100% dimmer, S-Gamma, Linear, L-Gamma, B-Gamma, could be customized according to buyer's requirements



TECHNICAL PARAMETERS

Electric parameter		Optical parameter		Mechanical and physical parameters	
Input Voltage	AC100-240V 50/60Hz	Light Source	OSRAM 19pcs 15W 4in1 RGBW LED	Case Material	Die Casting Aluminum
Power Consumption	183W	Color (light source)	RGBW	Protection Grade	Ip65
Control Signal	DMX512 M/S	Beam Angle	25° (35°、40°)	Working Temperature	-20 ~ 40°C
Control Channel	4/5/6/10CH(optional)	Illumination Intensity	727Lux /10m 25°	Net weight	8.35kg
DMX input/output	XLR 3PIN (In&Out)	Dimmer	0-100%	Dimension	326×253×296mm
Power Interface	Needle hole 3PIN Waterproof Interface	Strobe	0-20Hz	Application	Stage side light, backlight and other outdoor lightings



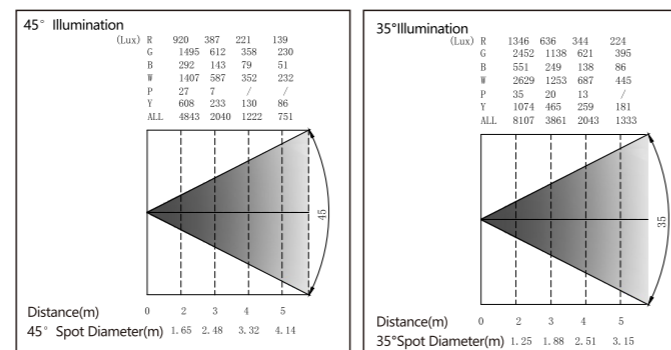
LED PAR
M-L183T1-RGBWPY(6IN1)



LED PAR
M-L162T1-RGBW

PRODUCTS FEATURE

- 1.High protection grade
- 2.Autonomous micro-light control technology, 0-100% dimming, and four kinds of dimming curves such as: S-Gamma, Linear, L-Gamma, B-Gamma, linear can be customized
- 3.Rich colors and good color rendition
- 4.Mute design

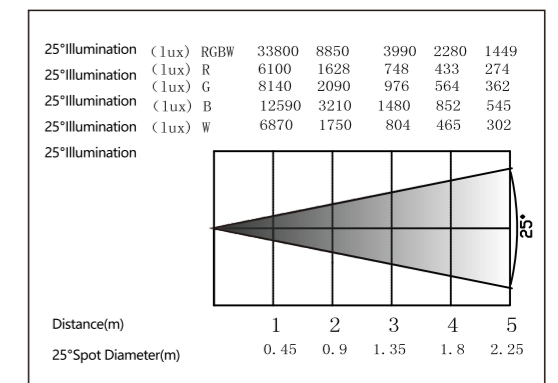


TECHNICAL PARAMETERS

Electric parameter		Optical parameter		Mechanical and physical parameters	
Input Voltage	AC100-240V 50/60Hz	Light Source	19pcs 8W 6in1 LED	Case Material	Die Casting Aluminum
Power Consumption	183W	Color (light source)	red, green,blue,white, amber,purple	Protection Grade	Ip65
Control Signal	DMX512 M/S	Beam Angle	35°、45°	Working Temperature	-20 ~ 40°C
Control Channel	7/12CH	Illumination Intensity	751Lux /5m 45°	Net weight	8.35kg
DMX input/output	XLR 3PIN (In & Out)	Dimmer	0-100%	Dimension	326×253×296mm
Power Interface	Needle hole 3PIN Waterproof Interface	Strobe	0-20Hz	Application	Stage side light, backlight and other outdoor lightings

PRODUCTS FEATURE

- 1.Wide range of intelligent zoom
- 2.High protection grade
- 3.Strong sense of beam
- 4.Uniform facular, no halo effect
- 5.Autonomous micro-light control technology, 0-100% dimming, and four kinds of dimming curves such as: S-Gamma, Linear, L-Gamma, B-Gamma, linear can be customized
- 6.Mute design



TECHNICAL PARAMETERS

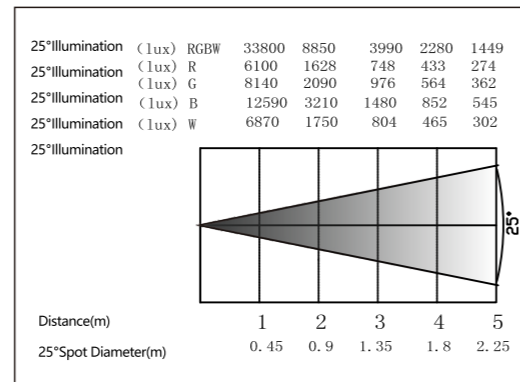
Electric parameter		Optical parameter		Mechanical and physical parameters	
Input Voltage	AC100-240V 50/60Hz	Light Source	54pcs 3W LEDs RGB 14 pcs 3W/pcs W 12 pcs 3W/pcs	Case Material	Die Casting Aluminum
Power Consumption	162W	Color (light source)	RGBW	Protection Grade	Ip65
Control Signal	DMX512 M/S	Beam Angle	25°(15°, 45°)	Working Temperature	-20 ~ 40°C
Control Channel	4/5/6/10CH (optional)	Illumination Intensity	1449Lux /5m 25°	Net weight	8.35kg
DMX input/output	XLR 3PIN (In&Out)	Dimmer	0-100%	Dimension	326×253×296mm
Power Interface	Needle hole 3PIN Waterproof Interface	Strobe	0-20Hz	Application	Stage side light, backlight and other outdoor lightings



LED PAR
M-L162T2- RGBW

PRODUCTS FEATURE

- 1.High protection grade
- 2.Uniform facular, no halo effect
- 3.Autonomous micro-light control technology, 0-100% dimming, and four kinds of dimming curves such as: S-Gamma, Linear, L-Gamma, B-Gamma, linear can be customized
- 4.Rich colors and good color rendition



TECHNICAL PARAMETERS

Electric parameter		Optical parameter		Mechanical and physical parameters	
Input Voltage	AC100-240V 50/60Hz	Light Source	54pcs 3W LEDs RGB 14 pcs 3W/pcs W 12 pcs 3W/pcs	Case Material	Die Casting Aluminum
Power Consumption	162W	Color (light source)	RGBW	Protection Grade	Ip20
Control Signal	DMX512 M/S	Beam Angle	25° (15°, 45°)	Working Temperature	-20 ~ 40°C
Control Channel	4/5/6/10CH(optional)	Illumination Intensity	1449Lux /5m 25°	Net weight	5.1kg
DMX input/output	XLR 3PIN (In&Out)	Dimmer	0-100%	Dimension	326×253×296mm
		Strobe	0-20Hz	Application	Light for face part, stage side light, light for ear part, top light and backlight



△ Reality Drama show "Red women army"



△ Chongqing International Circus City



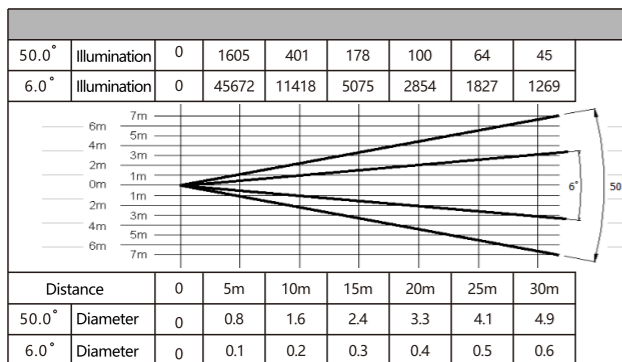
600W LED PROFILE
MOVING HEAD
MH-L600-BLADE

PRODUCTS FEATURE

- 1.600W LED module
- 2.Standard version / High CRI version (CRI>90)
- 3.Four rasters for fast and smooth cutting, each raster cutting direction and angle can be dependently controlled
- 4.The entire cutting module can be rotated 90°, linear Zoom, Zoom Angle range: 6°~50°, CMY + CTO stepless color mixed series
- 5.Four dimmer curves
- 6.Modular design for easier production, test and maintenance.

TECHNICAL PARAMETERS

Light source	High power 600W LED module
CRI	High CRI version (CRI≥90)
CMY	CMY + CTO (2700K-6500K) color mixed system
Color plate	1 color disk: 6 color plates+white light
Gobo	1 Rotation Gobo; 7 Plug-in rotation plate + white circle;1 Fixed Gobo; 7 Plug-in fixed plate + white circle (all can be replaced)
Cutting module	4 Rasters for fast and smooth cutting, each raster cutting direction and angle can be independently controlled; The entire cutting module can be rotated 90°;
Dynamic effect disk	Dynamic effects such as flame, turbulent water, etc.
Aperture	Aperture by 5%-100% linear adjustment
Prism	One prism by Bi-directional rotating quad prism
Atomization	0~100% linear atomization, 2 atomization (light and heavy atomization), 3 kinds of atomization effects
Dimmer	0-100% linear electronic dimmer
Strobe	Electronic strobe, frequency up to 25Hz, and optional random strobe and pulsed strobe
Zoom Range	Linear Zoom range: 6°~50°
Channel Mode	DMX512, 29/37/34 channels
N.W.	42Kg
Size	473×432×855 mm
Input Voltage	100V~240V AC,50/60Hz
Power Consumption	810W



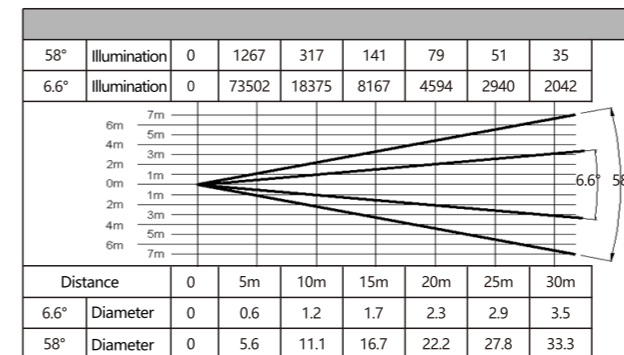
1400W BLADE PROFILE
MOVING HEAD LIGHT
MH-1400-BLADE

PRODUCTS FEATURE

- 1.Taking OSRAM Lok-it 1400-PS_Brilliant lamp, CRI can be more than 93
- 2.Equipped with high quality Germany Reflector, enables spot uniformity more than 80%
- 3.Zoom range can be freely changed between 6.5°-55°
- 4.Uniform and Smooth CMY+CTO color mixing system
- 5.With modularized construction design, after exchange of the assembly, the light will be fast changed into spot light, which decreases the cost largely for the user. Besides, it can also makes easily maintenance

TECHNICAL PARAMETERS

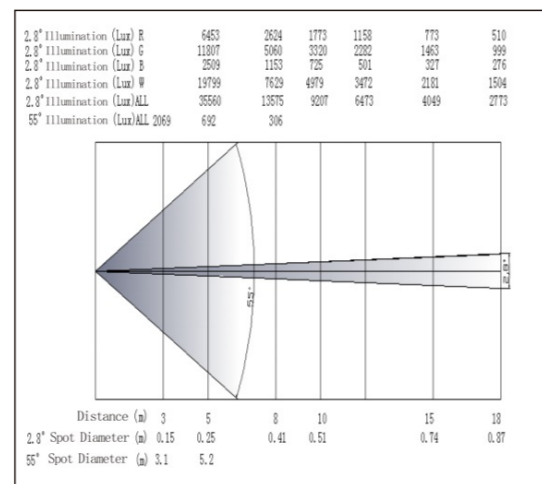
Light source	OSRAM lok-it 1400-PS_Brilliant
Color temperature	6000K
Life time	750 Hours
Luminous flux	120000 lm
Light holder	PGJ28 Lok-it
Power conversion	1400W / 1200W
Light effect	Total Luminous flux
Output	36000lm
CRI	Ra≥ 93, R9≥ 90
Uniformity	>80%
CMY	CMY+CTO, Color mixed system
1 Color plate	7 Color pieces+White light
Gobo	1 Rotation gobo plate; 7 Plug-in rotation pieces+ white circle, 1 Fixed Gobo plate; 7 fixed gobo pieces+ white circles, 1 dynamic wheel
Cutting module	90° rotation
Aperture	5%~99% smooth change ,changes spot size, optional aperture pulse function
Prism	One prism by Bi-directional rotating quad prism
Dimmer	Mechanical and 0-100% linear electronic dimmer
Strobe	Multiple speed strobe effects
Zoom range	6.6°~58°
Channel Mode	34/40 Channels
Weight	42.5kg
Size	473×432×850mm
Input Voltage	AC200-240V 50/60Hz
Power Consumption	1790W
Control protocol	DMX, Art-Net, RDM, Wireless control (optional)





PRODUCTS FEATURE

- 1.7pcs 60w, RGBW 4in1 led lamp
- 2.22-50°zoom range
- 3.HSIC color management system
- 4.Rotation lens, Bee eye pattern effect, dynamic beam effect

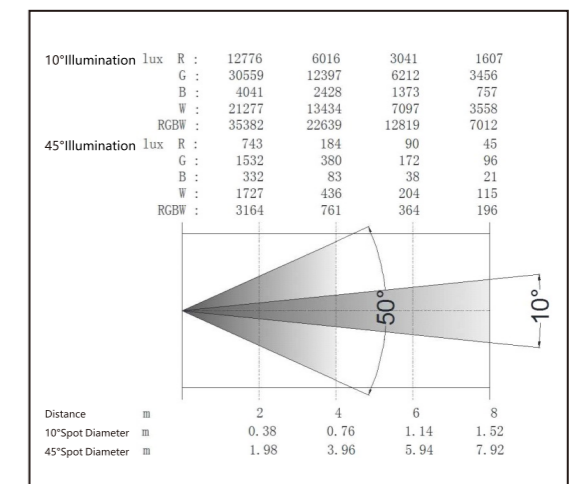


TECHNICAL PARAMETERS

Electric parameter		Optical parameter		Mechanical and physical parameters	
Input Voltage	AC100-240V 50/60Hz	Light Source	7pcs 60W 4in1 RGBW LED	Case Material	Engineering Plastic
Power Consumption	640W	Color (light source)	RGBW	Protection Grade	Ip20
Control Signal	DMX512 M/S	Color Temperature	2000-8000K adjustable	Working Temperature	-20 ~ 40°C
Control Channel	13/24/52CH	Horizontal/Vertical Scan	540°/270°	Net weight	18Kg
DMX input/output	XRL3/5-PIN (In&Out)	Beam Angle	2.8°~55°	Dimension	406×305×492mm
Power Interface	Aviation head	Illumination Intensity	13575Lux/8m 2.8°	Application	Theater, Studio
		Dimmer	0-100%		
		Strobe	0-20Hz		

PRODUCTS FEATURE

- 1.14pcs 30w, RGBW 4in1 led lamp
- 2.10-50°zoom range
- 3.HSIC color management system
- 4.Rotation lens, Bee eye pattern effect, dynamic beam effect



TECHNICAL PARAMETERS

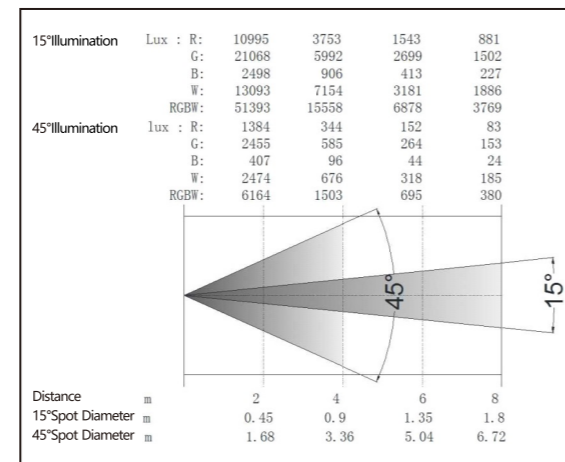
Electric parameter		Optical parameter		Mechanical and physical parameters	
Input Voltage	AC100-240V 50/60Hz	Light Source	14pcs 30W 4in1 RGBW LED	Case Material	Engineering Plastic
Power Consumption	≤600W	Color (light source)	RGBW	Protection Grade	Ip20
Control Signal	DMX512 M/S	Color Temperature	2000-8000K adjustable	Working Temperature	-10 ~ 40°C
Control Channel	12/18CH	Horizontal/Vertical Scan	540°/270°	Net weight	19Kg
DMX input/output	XRL3/5-PIN (In&Out)	Beam Angle	10°~50°	Dimension	406×305×492mm
Power Interface	Aviation head	Illumination Intensity	7012Lux/8m 10°	Application	Theater, Studio
		Dimmer	0-100%		
		Strobe	0-20Hz		



LED MOVING HEAD WASH
M-L2815YZ - RGBW(4IN1)

PRODUCTS FEATURE

- 1.28pcs 15w, RGBW 4in1 led lamp
- 2.15-45°zoom range
- 3.HSIC color management system
- 4.Rotation lens, Bee eye pattern effect, dynamic beam effect



TECHNICAL PARAMETERS

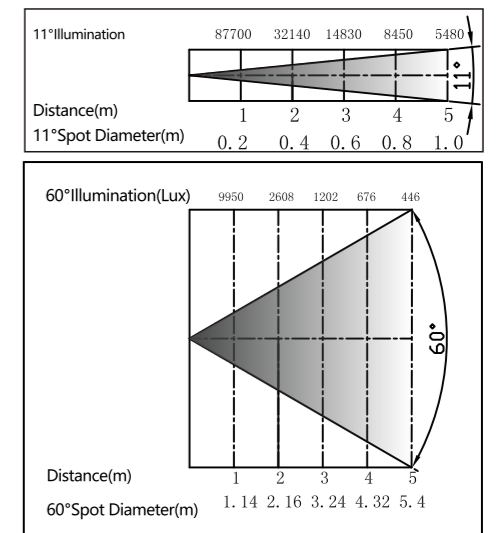
Electric parameter		Optical parameter		Mechanical and physical parameters	
Input Voltage	AC100-240V 50/60Hz	Light Source	28pcs 15W 4in1 RGBW LED	Case Material	Engineering Plastic
Power Consumption	≤600W	Color (light source)	RGBW	Protection Grade	Ip20
Control Signal	DMX512 M/S	Color Temperature	2000-8000K adjustable	Working Temperature	-10 ~ 40°C
Control Channel	12/18CH	Horizontal/Vertical Scan	540°/270°	Net weight	19Kg
DMX input/output	XRL3/5-PIN (In&Out)	Beam Angle	15°~45°	Dimension	406×305×492mm
Power Interface	Aviation head	Illumination Intensity	3769Lux/8m 15°	Application	Theater, Studio
		Dimmer	0-100%		
		Strobe	0-20Hz		



LED MOVING HEAD WASH
M-L285YZ - RGBW(4IN1)

PRODUCTS FEATURE

- 1.Built-in a variety of lighting effects program, can be synchronized from the console voice synchronization
- 2.Blue liquid crystal display, more convenient operation
- 3.Small size, moving fast, powerful LED shaking head beam
- 4.0-100% smooth dimming, dimming curve can be customized
- 5.Osram RGBW 4in1 light Source



TECHNICAL PARAMETERS

Electric parameter		Optical parameter		Mechanical and physical parameters	
Input Voltage	AC100-240V 50/60Hz	Light Source	19pcs 15W Osram LED	Case Material	Engineering Plastic
Power Consumption	260W	Color (light source)	RGBW	Protection Grade	Ip20
Control Signal	DMX512 M/S	Color Temperature	2000-8000K adjustable	Working Temperature	-10 ~ 40°C
Control Channel	16/20/24CH	Beam Angle	11°~60°	Net weight	10Kg
DMX input/output	XRL3/5-PIN (In&Out)	Illumination Intensity	5480Lux/5m 11°	Dimension	405×285×505mm
		Dimmer	0-100%	Application	Theater, Studio
		Strobe	0-20Hz		



LED MOVING HEAD WASH
M-L324YZ -RGBW

PRODUCTS FEATURE

- 1.0-100% smooth dimming, Built-in 4 kinds of dimming curve, 2M mediate, Quick, Normal, Smooth can be customized according to customer requirements
- 2.Uniform RGB color mixing effect and rainbow effect
- 3.LCD display

8° (Lux) R	8800	2860	2210	1110	768
(Lux) G	8750	3120	2290	1223	815
(Lux) B	15900	5960	4240	2330	1490
(Lux) w	15320	5800	4180	2290	1488
(Lux) ALL	48500	17760	12670	6950	4480

Distance (m)	3	5	6	8	10
8°Spot Diameter (m)	0.42	0.70	0.84	1.12	1.4

38° (Lux) R	668	238	188	95	72
(Lux) G	885	319	220	128	98
(Lux) B	1445	518	374	208	147
(Lux) w	1630	525	368	206	158
(Lux) ALL	3930	1471	1063	606	420

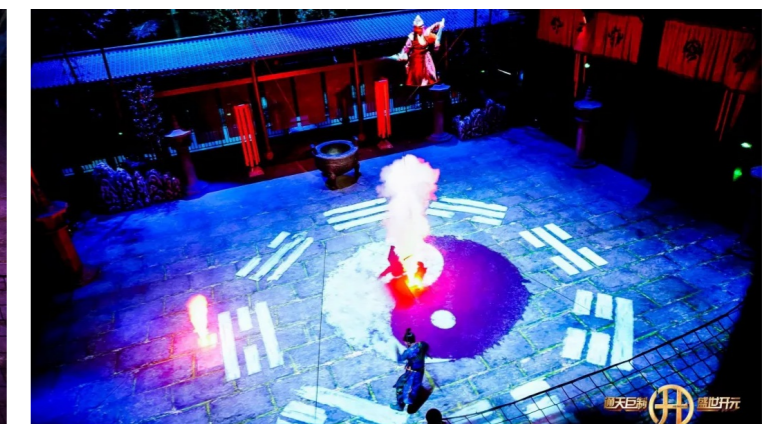
Distance (m)	3	5	6	8	10
38°Spot Diameter (m)	2.04	3.40	4.08	5.45	6.81

TECHNICAL PARAMETERS

Electric parameter		Optical parameter		Mechanical and physical parameters	
Input Voltage	AC100-240V 50/60Hz	Light Source	108pcs 3W LED,R/G/B 28pcs, W 24pcs	Case Material	Engineering Plastic
Power Consumption	324W	Color (light source)	RGBW	Protection Grade	Ip20
Control Signal	DMX512 M/S	Color Temperature	2000-8000K adjustable	Working Temperature	-20 ~ 40°C
Control Channel	8/12/18CH	Horizontal/Vertical Scan	540°/270°	Net weight	9.8Kg
DMX input/output	XRL3/5-PIN (In&Out)	Beam Angle	8°~38°	Dimension	394×222×456mm
		Illumination Intensity	8280Lux/8m 9°	Application	Theater, Studio
		Dimmer	0-100%		
		Strobe	0-20Hz		



△ Haiya Grand Theater



△ Huayi Brothers (Suzhou) Movie World

ONE STOP SERVICE FOR LED LIGHTING AND DISPLAY

