



MASTERPIECE

User Manual

Contents

1. Vital Precautions.....	3
2. Introduction.....	4
2.1. Specifications:.....	4
2.2. Basic components.....	4
2.3. Photometrics	5
3. Manual control of Masterpiece.....	5
3.1. Getting started	6
4. The Menu	6
4.1. CCT.....	7
4.2. RGBWW	7
4.3. HSI.....	9
4.4. Gel.....	9
4.5. XY - This mode will be available soon!	10
4.6. Effects	10
4.7. Settings.....	11
4.7.1. Timer.....	11
4.7.2. Options	12
4.7.3. Lumen Radio.....	12
4.7.4. Accessories	13
4.8. DMX.....	14
4.8.1. CCT DMX Channels Chart.....	15
4.8.2. RGBWW DMX Channels Chart.....	19
4.8.3. HSI DMX Channels Chart	21
4.8.4. GEL DMX Channels Chart.....	22
4.8.5. DMX - Ultimate mode.....	24
5. Controlling Masterpiece with SkyBeast console	25
5.1. Mode selection.....	27
5.2. Memory pre-sets	28
5.3. Auto Memory recall.....	29
5.4. Memory Loop cycle	29
5.5. General Master Settings.....	30
5.5.1. General dimmer control	30
5.5.2. Chasing lights.....	30
5.5.3. General memory recall.....	31
6. WARRANTY LETTER	32

User Manual

1. Vital Precautions

WARNING! High voltage! Risk of electric shock and fire.

- Read and understand all safety information and operation instructions before you operate or install the product or the system.
- Use solely and exclusively as described in the instructions.
- Always check that the local AC power matches the voltage and frequency range printed on the type label of the product before use.
- Always earth the fixture electrically.
- Use only a genuine Senna power supply and connection cable designed for the Masterpiece.
- Do not connect or disconnect the header cable when powered. The connectors can be damaged by arcing.
- Never use the cables for transportation. Never hang the product on its cables.
- Never attempt to repair any part of the product on your own.

WARNING! Humidity and Condensation! Risk of electric shock and fire.

- Never expose the product directly to rain or moisture.
- Do not use the product for 2 h when it was exposed to big temperature differences as condensed moisture may damage the product electrically when switched on.

WARNING! Overheating! Risk of fire.

- Do not operate the product in its full power if the environment temperature exceeds 30° C.
- When environment temperature exceeds 30° C, the Product must be used on 70% of its power.
- Intensive use can cause the surface to become hot. Let the product cool down complete before you handle it.
- Never cover air vents during operation. Keep a minimum clearance around the air vents of 0.5 m.
- Never point a light beam from another luminaire into the diffuser.
- Do not place the product on or nearby heat sources. Intense heat cause damage to the product or automatic power off during operation.
- Do not use the products with **lens and diffuser** at the same time!

WARNING! Intense Light! Risk of injury and fire.

- Do not stare at operating light source.
- Intense light. Do not stare at the light output aperture. Risk of irreversible eye injury. Wear safety glasses. Keep a minimum distance to an illuminated surface, objects or persons of 1m.

WARNING! Heavy weight! Risk of injury and damage.

- Keep your fingers away from joints and moving parts.
- Devices and accessories must be secured against fall when mounted above floor level.
- Always observe common and local safety regulations.
- Disconnect all cables prior to transport.

User Manual

2. Introduction

2.1. Specifications:

MASTERPIECE - LED PANEL	
Parameter	Value
Series	Masterpiece
LED configuration	Full RGB + W + W
Dimensions	1100 x 1070 mm
Weight	34 kg
Light aperture	1000 x 1020 mm
Voltage input	48 Vdc +/- 5%
Power consumption	2400W maximum
Unit power connection :	WEIPU 32 series 4 pin
Dimming	0% to 100% continuous
Flicker	flicker free 10% to 100%
Color temperature	1.500 – 20.000K
Control	Full on board touch screen/wired DMX/LumenRadio CRMX wireless
Beam angle	60° (half peak angle), 15° with optical lens, 120° with diffuser
Color rendering	CRI average > 97
IP rating	IP20
Operation temperature-	Max. power: -20°C to + 30°C; 70% power: >+30°C

MASTERPIECE - POWER SUPPLY	
Parameter	Value
Series	PS3000
Dimension	420 x 210 x 175 mm
Weight	approx. 12kg
Input range	100 to 240Vac, 50/60HZ, 3300VA max
Output range	48 Vdc, 64A, 3000VA max
Power input connection	NEUTRIK power CON 32A / Schuko (EU), 2meter
Power output connection	WEIPU 32 series 4pin
Operation temperature	-20°C to + 35°C

2.2. Basic components

1. Light fixture
2. Stand adapter
3. Power supply
4. Cabling

User Manual

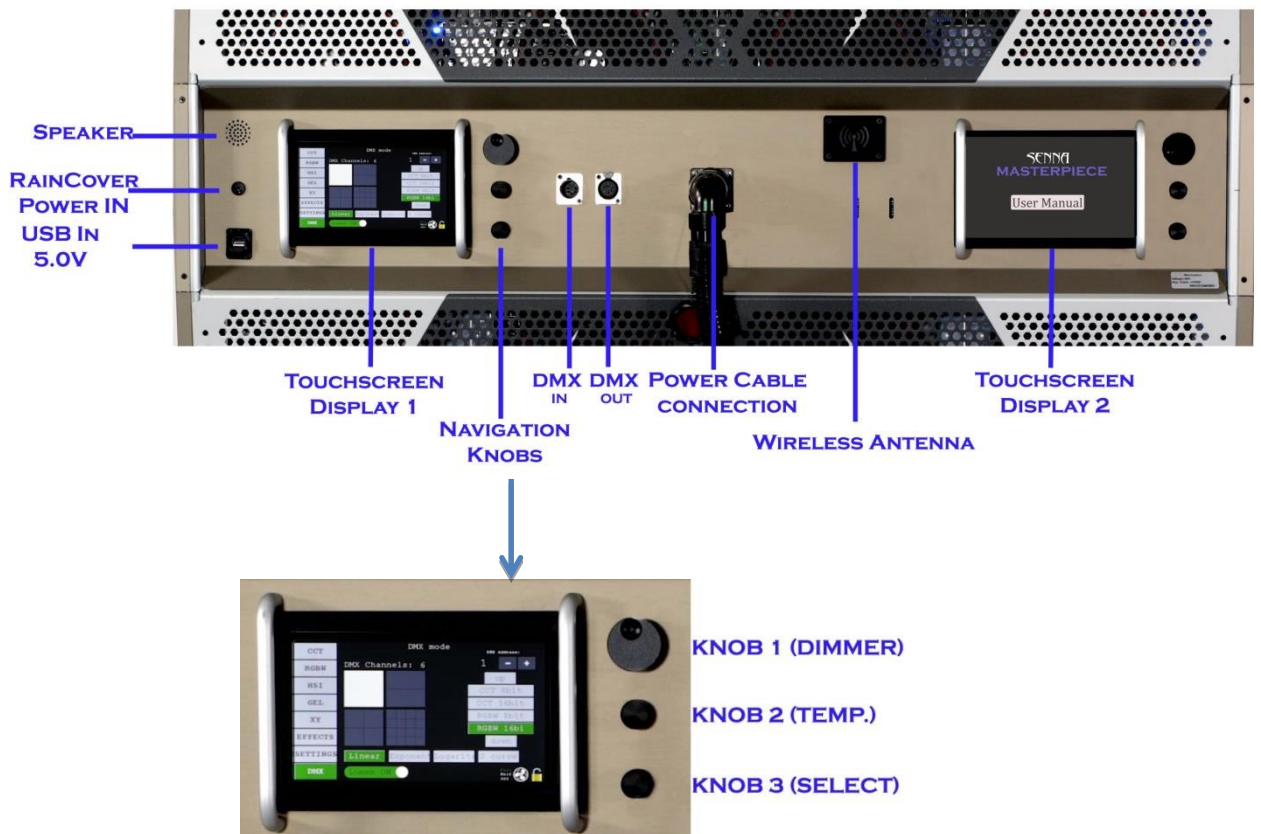
2.3. Photometrics

Photometrics (lux) 60° lens (Device: Sekonic Spectromaster C-700)						
Distance	3200K	5600K	4600K	Red	Green	Blue
1m	129 000	148 000	144 000	13 700	22 300	6 240
3m	25 400	29 500	29 100	2 090	4 190	1 210
5m	10 400	11 900	11 900	843	1 680	483
10m	2 800	3 240	3 200	213	437	126
30m	283	317	318	19.2	36.8	11.3

Photometrics (lux) 15° lens (Device: Sekonic Spectromaster C-700)						
Distance	3200K	5600K	4600K	Red	Green	Blue
1m	122 000	132 000	132 000	11 400	20 800	6 140
3m	51 700	57 100	57 300	5 410	8 640	2 430
5m	26 700	29 990	29 800	3 550	4 930	1 330
10m	8 020	8 710	8 900	1 400	1 770	450
30m	1 002	1 010	1 010	211	238	59

3. Manual control of Masterpiece

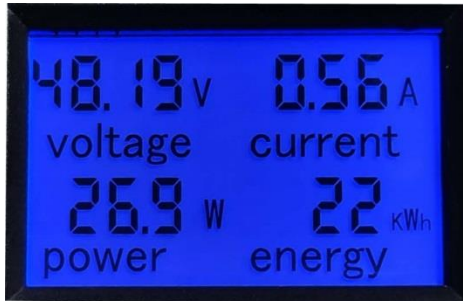
Masterpiece dashboard



User Manual

3.1. Getting started

1. Connect the Masterpiece with power supply box with the enclosed cable.
2. Turn the power supply on.



Power supply display



Masterpiece display

3. The display of power supply will show voltage, current, power and energy consumption (see the picture above)
4. The display 1 on the Masterpiece control board will show introduction message. The QR code on the introduction message takes you to www.senna.hr where you can find more info about Masterpiece.
5. After 10 seconds Main Menu will show on Masterpiece display.
6. These User Manuals are available on Masterpiece display 2. Touch the screen to navigate the Manuals.

4. The Menu

There are 8 modes available in the Menu:

1. CCT
2. RGBW
3. HSI
4. GEL
5. XY
6. Effects
7. Settings
8. DMX



- To choose any of these modes simply touch the screen. The icon of the mode you have selected will turn green.
- In the right down angle, there are 2 icons:

User Manual



Touch to lock/turn off the screen. To turn the screen on again, touch the screen or turn any knob.



Touch to change the level of fan speed to FULL, HALF or OFF. Selected level will turn green.

4.1. CCT



1. To choose CCT mode simply touch the CCT icon in the left menu in the screen. The icon will turn green.
2. There are CCT and CCT+ option for your selection. Touch the screen to choose one. The icon will turn green.
CCT mode provides temperature range from 3.000K to 6.000K
CCT+ mode provides temperature range from 1.500K to 20.000K
3. To make adjustments of dimmer, temperature and green/magenta point, you can slide your finger along the lines or use regulation knobs on the right side of the display:
 - Use regulation knob 1 to adjust dimmer (for fast dimmer adjustments, press knob 1– 1 time for 25%, two times for 50%, 3 times for 75%, 4 times for 100%)
 - Use regulation knob 2 to adjust temperature (for fast temperature adjustments, press knob 2 – 1 time for 3.200K, two times for 4.500K, 3 times for 5.600K)
 - Use regulation knob 3 to adjust green/magenta (for fast return to 0%, press knob 3)
4. To save the adjustments you have made as a memory pre-set simply touch one of 6 memory buttons at the bottom of the screen. The number of saved memory pre-set will turn green.

4.2. RGBWW

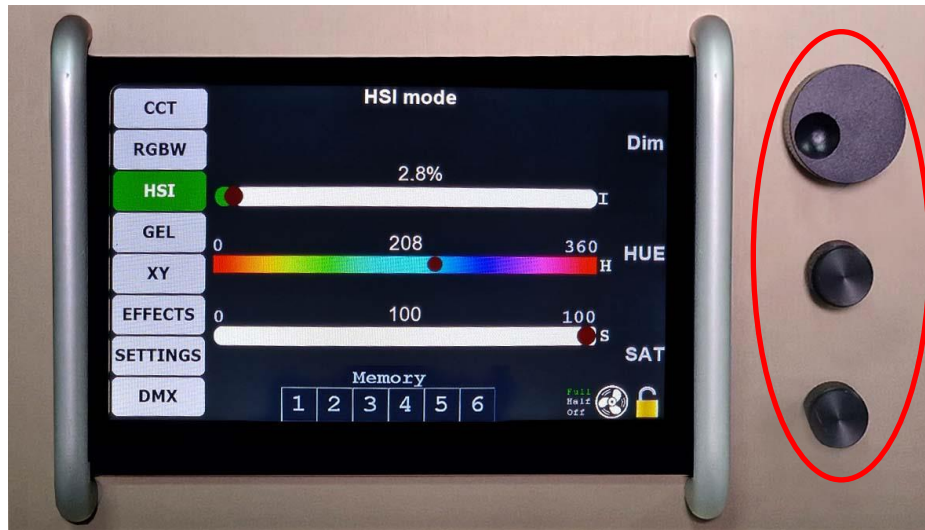
User Manual



1. To choose RGBW mode simply touch the RGBW icon in the left menu in the screen. The icon will turn green.
2. To select a colour (Red, Green, Blue, White, Warm White) you want to adjust, simply touch the icon with a color, or use regulation knob 3 (select).
The icon of the colour you have selected will get white frame.
3. To adjust **dimmer of a selected color** – use regulation knob 2 (single color)
Dimmer percentage will show on the selected color icon.
(for fast dimmer adjustments, press knob 1– 1 time for 25%, two times for 50%, 3 times for 75%, 4 times for 100%)
4. To adjust **dimmer in general** – use regulation knob 1 (dimmer)
General dimmer percentage will show in the right upper corner of the display.
(for fast dimmer adjustments, press knob 1– 1 time for 25%, two times for 50%, 3 times for 75%, 4 times for 100%)
Please note! General dimmer is limited to 2.6kW power consumption. If you turn all colors to intensity of 100%, general dimmer will not be 100%, it will get lower in order to maintain power consumption of 2.6kW.
5. To save the adjustments you have made as a memory pre-set simply touch one of 6 memory buttons at the bottom of the screen. The number of saved memory pre-set will turn green.
6. There are also 15 color presets which you can select by touching the icon.

User Manual

4.3. HSI



1. To choose HSI mode simply touch the HSI icon in the left menu in the screen. The icon will turn green.
2. To make adjustments of dimmer, hue and saturation you can slide your finger along the lines or use regulation knobs on the right side of the display:
 - Use regulation knob 1 to adjust Dimmer
 - Use regulation knob 2 to adjust Hue
 - Use regulation knob 3 to adjust Saturation
3. To save the adjustments you have made as a memory pre-set simply touch one of 6 memory buttons at the bottom of the screen. The number of saved memory pre-set will turn green.

4.4. Gel



1. To choose Gel mode simply touch the Gel icon in the left menu in the screen. The icon will turn green.
2. There are 3 Gel groups available in this mode:

User Manual

1. Lee Color correction
2. Lee Filters Color
3. Rosco Color

To select one of these groups simply touch its icon. The icon will turn green.

3. Each of the 3 gel groups has different gels for your selection. Choose any of them by touching its icon or using the regulation knob 3 (Select)
4. Use regulation knob 1 to adjust Dimmer
5. Use regulation knob 2 to adjust color temperature Base (from 3.200K to 5.600K)
6. To save the adjustments you have made as a memory pre-set simply touch one of 6 memory buttons at the bottom of the screen. The number of saved memory pre-set will turn green.

4.5. XY - This mode will be available soon!

4.6. Effects



1. To choose **Effect mode** simply touch the Effect icon in the left menu in the screen. The icon will turn green.
2. There are **5 groups of effects** available in this mode:
 1. **Basic** - TV, Welding, Paparazzi, Kachusha, Fireworks, Explosion, Test*
 2. **Natural** - Lightning, Fire single, Fire Multi, Candles, Clouds, Comet, Sunrise, Sunset, Aurora
 3. **Warning** - Police, Security, Warning, Fireman
 4. **Party** – Color Chase, Strobe, Disco ball
 5. **Travel** - Snake, Snake Reverse, Snake White

***Test effect** is used only to indicate LED panel addresses, and you should use it prior to firmware update. More about this subject is available in Firmware update instructions.

To select one of these effects simply touch its icon.
The icon will turn green, and the effect will perform.

3. Use regulation knob 1 to adjust Dimmer
4. Use regulation knob 2 to adjust color temperature
5. Use regulation knob 3 to adjust the speed of effect

User Manual

4.7. Settings



To choose Settings mode simply touch the Settings icon in the left menu in the screen. The icon will turn green.

Display will show these settings:

- Timer
- Options
- Lumen radio
- Accessories

4.7.1. Timer

To enter timer settings simply touch its icon. Display will show 2 timers:

- **General time** – shows total time the fixture has been used. This timer cannot be reset!
- **User Time** – shows time the fixture has been used since last reset of the timer.



User Manual

To reset User Timer, please follow the steps:

1. Touch the User Timer.
2. You will be asked to enter 4 digits PIN provided by Manufacturer.
3. After you have entered correct pin, press OK
4. User Timer will be set to 00:00

To go back to Settings, simply touch the Settings icon on the left.

4.7.2. Options

To enter Options settings simply touch its icon. Display will show 3 settings:

- **Volume** - If you turn the volume up, the voice will pronounce every command you select in the menu.
- **Logo light** –with this command you can adjust the intensity of Masterpiece logo light at the back side of the Masterpiece body.
- **Display min.:** this command allows you to adjust the length of inactivity period after which the display will turn off.



To adjust the level of volume, logo light and display min., simply slide along the line with your finger. To go back to Settings, simply touch the Settings icon on the left.

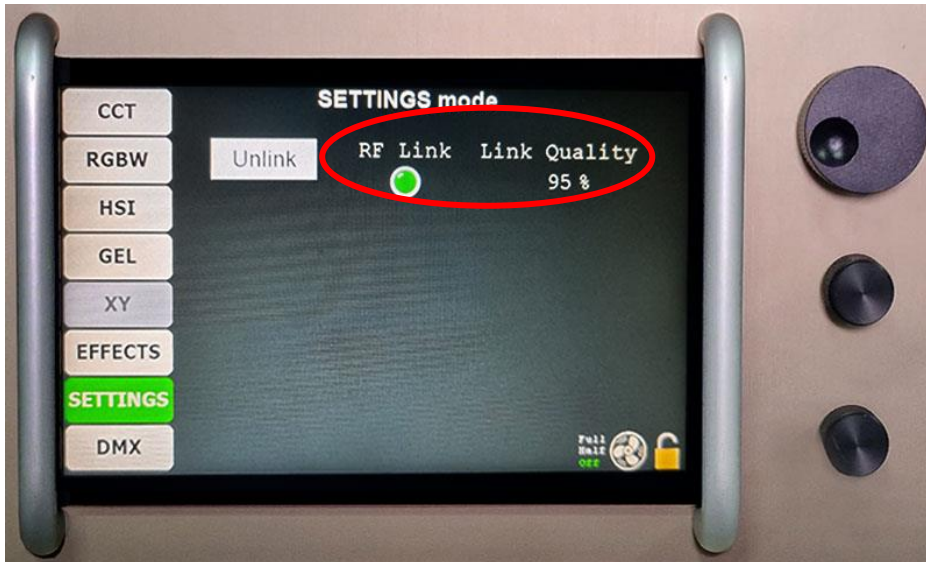
4.7.3. Lumen Radio

Lumen Radio settings enable you to UNLINK Masterpiece from your lumen radio device. When lumen radio device is linked, *RG Link* indicator will turn green and *link quality* will show connection strength in percentage.

User Manual

To unlink it, please follow the steps:

1. Enter Lumen radio settings by touching its icon. The icon will turn green.
2. Display will show the UNLINK button.
3. Touch UNLINK button.
4. Lumen radio is unlinked.



4.7.4. Accessories

Before any use of the Masterpiece with accessories it is essential to adjust cooling and power of the fixture first. The system will make automatic adjustments with these steps:

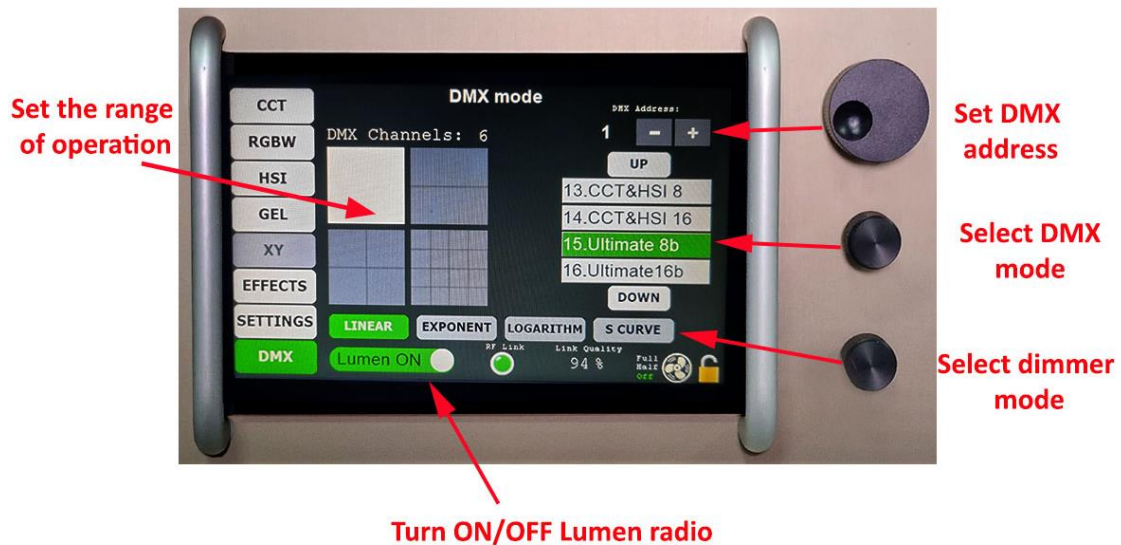
1. Enter Accessories settings by touching its icon. The icon will turn green.
2. Display will show different Accessories icons.
3. Touch the icon to make your selection. The icon will turn green.
4. System will automatically adjust cooling and power in accordance to your selection.



User Manual

4.8. DMX

To enter RGBWW mode simply touch the RGBW icon in the left menu. The icon will turn green and display will show these information:



1. First thing you need to do is to set the range of operation, by choosing the segment(s) of Masterpiece you want to control separately. You can do that by touching the parts in the picture (below). Selected segment will turn white:



2. Set DMX address by touching **+** - buttons
 - **To set and lock DMX address**, turn the knob 1 until you reach desirable number and then press knob 1 to lock your selection. Number will turn red and you will not be able to change it with +- buttons.
 - **To unlock the address**, press knob 1



User Manual

once more.

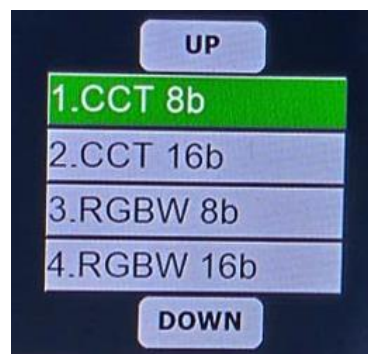
3. Select Dimmer mode. There are 4 dimmer modes available for your selection.
 1. Linear
 2. Exponent (temporary not available)
 3. Logarithm (temporary not available)
 4. S curve (temporary not available)

You can select one of these by touching the icon or using the navigation knob 3. Selected icon will turn green.

4. Now you can select the mode of operation by touching **UP** or **DOWN** button or using the navigation knob 2. Selected icon will turn green.

There are 5 DMX modes available:

1. CCT 8 bit
2. RGBW 8 bit
3. HSI 8 bit
4. GEL
5. ULTIMATE 8 bit



4.8.1. CCT DMX Channels Chart

1 Segment Control	
Seg. 1	<ol style="list-style-type: none">1. Dimmer2. Color Temp.*3. Green/Magenta4. CCT/CCT+

User Manual

CCT/CCT+ Color temperature chart:

CCT DMX		
MIN	MAX	K
0	15	3000
16	23	3100
24	31	3200
32	39	3300
40	47	3400
48	55	3500
56	63	3600
64	71	3700
72	79	3800
80	87	3900
88	95	4000
96	103	4100
104	111	4200
112	119	4300
120	127	4400
128	135	4500
136	143	4600
144	151	4700
152	159	4800
160	167	4900
168	175	5000
176	183	5100
184	191	5200
192	199	5300
200	207	5400
208	215	5500
216	223	5600
224	231	5700
232	239	5800
240	247	5900
248	255	6000

User Manual

CCT + DMX		
MIN	MAX	K
0	35	1500
36	36	1600
37	37	1700
38	38	1800
39	39	1900
40	40	2000
41	41	2100
42	42	2200
43	43	2300
44	44	2400
45	45	2500
46	46	2600
47	47	2700
48	48	2800
49	49	2900
50	50	3000
51	51	3100
52	52	3200
53	53	3300
54	54	3400
55	55	3500
56	56	3600
57	57	3700
58	58	3800
59	59	3900
60	60	4000
61	61	4100
62	62	4200
63	63	4300
64	64	4400
65	65	4500
66	66	4600
67	67	4700
68	68	4800
69	69	4900
70	70	5000
71	71	5100
72	72	5200
73	73	5300
74	74	5400
75	75	5500
76	76	5600
77	77	5700
78	78	5800

CCT + DMX		
MIN	MAX	K
79	79	5900
80	80	6000
81	81	6100
82	82	6200
83	83	6300
84	84	6400
85	85	6500
86	86	6600
87	87	6700
88	88	6800
89	89	6900
90	90	7000
91	91	7100
92	92	7200
93	93	7300
94	94	7400
95	95	7500
96	96	7600
97	97	7700
98	98	7800
99	99	7900
100	100	8000
101	101	8100
102	102	8200
103	103	8300
104	104	8400
105	105	8500
106	106	8600
107	107	8700
108	108	8800
109	109	8900
110	110	9000
111	111	9100
112	112	9200
113	113	9300
114	114	9400
115	115	9500
116	116	9600
117	117	9700
118	118	9800
119	119	9900
120	120	10000
121	121	10100
122	122	10200

User Manual

CCT+ DMX			CCT+ DMX		
MIN	MAX	K	MIN	MAX	K
123	123	10300	167	167	14700
124	124	10400	168	168	14800
125	125	10500	169	169	14900
126	126	10600	170	170	15000
127	127	10700	171	171	15100
128	128	10800	172	172	15200
129	129	10900	173	173	15300
130	130	11000	174	174	15400
131	131	11100	175	175	15500
132	132	11200	176	176	15600
133	133	11300	177	177	15700
134	134	11400	178	178	15800
135	135	11500	179	179	15900
136	136	11600	180	180	16000
137	137	11700	181	181	16100
138	138	11800	182	182	16200
139	139	11900	183	183	16300
140	140	12000	184	184	16400
141	141	12100	185	185	16500
142	142	12200	186	186	16600
143	143	12300	187	187	16700
144	144	12400	188	188	16800
145	145	12500	189	189	16900
146	146	12600	190	190	17000
147	147	12700	191	191	17100
148	148	12800	192	192	17200
149	149	12900	193	193	17300
150	150	13000	194	194	17400
151	151	13100	195	195	17500
152	152	13200	196	196	17600
153	153	13300	197	197	17700
154	154	13400	198	198	17800
155	155	13500	199	199	17900
156	156	13600	200	200	18000
157	157	13700	201	201	18100
158	158	13800	202	202	18200
159	159	13900	203	203	18300
160	160	14000	204	204	18400
161	161	14100	205	205	18500
162	162	14200	206	206	18600
163	163	14300	207	207	18700
164	164	14400	208	208	18800
165	165	14500	209	209	18900
166	166	14600	210	210	19000

User Manual

CCT+ DMX		
MIN	MAX	K
211	211	19100
212	212	19200
213	213	19300
214	214	19400
215	215	19500
216	216	19600
217	217	19700
218	218	19800
219	219	19900
220	255	20000

4.8.2. RGBWW DMX Channels Chart

1 Segment Control		2 Segments Control		4 Segments Control	
Seg. 1	<ol style="list-style-type: none"> 1. Dimmer 2. RED dim. 3. GREEN dim. 4. BLUE dim. 5. WHITE dim. 6. W.WHITE dim. 	Seg. 1	<ol style="list-style-type: none"> 1. General Dim 2. Dimmer 3. RED dim. 4. GREEN dim. 5. BLUE dim. 6. WHITE dim. 7. W.WHITE dim. 	Seg. 1	<ol style="list-style-type: none"> 1. General Dim 2. Dimmer 3. RED dim. 4. GREEN dim. 5. BLUE dim. 6. WHITE dim. 7. W.WHITE dim.
				Seg. 2	<ol style="list-style-type: none"> 8. Dimmer 9. RED dim. 10. GREEN dim. 11. BLUE dim. 12. WHITE dim. 13. W.WHITE dim.
		Seg. 2	<ol style="list-style-type: none"> 8. Dimmer 9. RED dim. 10. GREEN dim. 11. BLUE dim. 12. WHITE dim. 13. W.WHITE dim. 	Seg. 3	<ol style="list-style-type: none"> 14. Dimmer 15. RED dim. 16. GREEN dim. 17. BLUE dim. 18. WHITE dim. 19. W.WHITE dim.
				Seg. 4	<ol style="list-style-type: none"> 5. Dimmer 6. RED dim. 7. GREEN dim. 8. BLUE dim. 9. WHITE dim. 10. W.WHITE dim.

User Manual

16 Segments Control					
Panel 1	1.General dimmer 2.Dimmer 3.RED dimmer 4. GREEN dimmer 5. BLUE dimmer 6. WHITE dimmer 7. W.WHITE dimer	Panel 6	32.Dimmer 33.RED dimmer 34. GREEN dimmer 35. BLUE dimmer 36. WHITE dimmer 37. W.WHITE dimer	Panel 11	62.Dimmer 63.RED dimmer 64. GREEN dimmer 65. BLUE dimmer 66. WHITE dimmer 67. W.WHITE dimer
Panel 2	8.Dimmer 9.RED dimmer 10. GREEN dimmer 11. BLUE dimmer 12. WHITE dimmer 13. W.WHITE dimer	Panel 7	38.Dimmer 39.RED dimmer 40. GREEN dimmer 41. BLUE dimmer 42. WHITE dimmer 43. W.WHITE dimer	Panel 12	68.Dimmer 69.RED dimmer 70. GREEN dimmer 71. BLUE dimmer 72. WHITE dimmer 73. W.WHITE dimer
Panel 3	14.Dimmer 15.RED dimmer 16. GREEN dimmer 17. BLUE dimmer 18. WHITE dimmer 19. W.WHITE dimer	Panel 8	44.Dimmer 45.RED dimmer 46. GREEN dimmer 47. BLUE dimmer 48. WHITE dimmer 49. W.WHITE dimer	Panel 13	74.Dimmer 75.RED dimmer 76. GREEN dimmer 77. BLUE dimmer 78. WHITE dimmer 79. W.WHITE dimer
Panel 4	20.Dimmer 21.RED dimmer 22. GREEN dimmer 23. BLUE dimmer 24. WHITE dimmer 25. W.WHITE dimer	Panel 9	50.Dimmer 51.RED dimmer 52. GREEN dimmer 53. BLUE dimmer 54. WHITE dimmer 55. W.WHITE dimer	Panel 14	80.Dimmer 81.RED dimmer 82. GREEN dimmer 83. BLUE dimmer 84. WHITE dimmer 85. W.WHITE dimer
Panel 5	26.Dimmer 27.RED dimmer 28. GREEN dimmer 29. BLUE dimmer 30. WHITE dimmer 31. W.WHITE dimer	Panel 10	56.Dimmer 57.RED dimmer 58. GREEN dimmer 59. BLUE dimmer 60. WHITE dimmer 61. W.WHITE dimer	Panel 15	86.Dimmer 87.RED dimmer 88. GREEN dimmer 89. BLUE dimmer 90. WHITE dimmer 91. W.WHITE dimer
				Panel 16	92.Dimmer 93.RED dimmer 94. GREEN dimmer 95. BLUE dimmer 96. WHITE dimmer 97. W.WHITE dimer

User Manual

4.8.3. HSI DMX Channels Chart

1 Segment Control		2 Segments Control		4 Segments Control	
Seg. 1	1. Dimmer 2. Hue 3. Saturation	Seg. 1	1. General Dim 2. Dimmer 3. Hue 4. Saturation	Seg. 1	1. General Dim 2. Dimmer 3. Hue 4. Saturation
				Seg. 2	5. Dimmer 6. Hue 7. Saturation
		Seg. 2	5. Dimmer 6. Hue 7. Saturation	Seg. 3	8. Dimmer 9. Hue 10. Saturation
				Seg. 4	11. Dimmer 12. Hue 13. Saturation

16 Segments Control					
Panel 1	1. General dimmer 2. Dimmer 3. Hue 4. Saturation	Panel 6	17. Dimmer 18. Hue 19. Saturation	Panel 11	32. Dimmer 33. Hue 34. Saturation
Panel 2	5. Dimmer 6. Hue 7. Saturation	Panel 7	20. Dimmer 21. Hue 22. Saturation	Panel 12	35. Dimmer 36. Hue 37. Saturation
Panel 3	8. Dimmer 9. Hue 10. Saturation	Panel 8	23. Dimmer 24. Hue 25. Saturation	Panel 13	38. Dimmer 39. Hue 40. Saturation
Panel 4	11. Dimmer 12. Hue 13. Saturation	Panel 9	26. Dimmer 27. Hue 28. Saturation	Panel 14	41. Dimmer 42. Hue 43. Saturation
Panel 5	14. Dimmer 15. Hue 16. Saturation	Panel 10	29. Dimmer 30. Hue 31. Saturation	Panel 15	44. Dimmer 45. Hue 46. Saturation
				Panel 16	47. Dimmer 48. Hue 49. Saturation

User Manual

4.8.4. GEL DMX Channels Chart

1 Segment control only
1. Channel – Dimmer
2. Channel – Color temperature base
3. Channel – 1 group (Lee Color Correction)Gel selection –range 5-104
4. Channel – 2 group (Lee Filter Color)Gel selection–range 5-94
5. Channel – 3 group (Rosco Color)Gel selection – range 5-99

4.8.4.1. GEL Groups Charts

Group 1 - Lee Color Correction

Gel range	Gel Name	Gel Number
5-9	Eighth 1/8 CTO	223
10-14	Quarter 1/4 CTO	206
15-19	Half 1/2 CTO	205
20-24	Three quarters 3/4CTO	285
25-29	Full 1/1 CTO	204
30-34	Double 2/1 CTO	287
35-39	Eighth 1/8 CTB	218
40-44	Quarter 1/4 CTB	203
45-49	Half 1/2 CTB	202
50-54	Three quarters 3/4 CTB	281
55-59	Full 1/1 CTB	201
60-64	Double 2/1 CTB	200
65-69	Plus Green 1/8	278
70-74	Plus Green 1/4	246
75-79	Plus Green 1/2	245
80-84	Plus Green 1/1	244
85-89	Minus Green 1/8	279
90-94	Minus Green 1/4	249
95-99	Minus Green 1/2	248
100-104	Minus Green 1/1	247
105-109	Fluorescent 5700K	241
110-104	Fluorescent 4300K	242

User Manual

Group 2- Lee Filters Color

Gel range	Gel Name	Gel Number
5-9	Rose Pink	2
10-14	Dark Magenta	46
15-19	Lavender	58
20-24	Pale Blue	63
25-29	Sky Blue	68
30-34	Evening Blue	75
35-39	Moss Green	89
40-44	Dark Yellow Green	90
45-49	Bright Pink	128
50-54	Deep Blue	120
55-59	Yellow	101
60-64	Golden Amber	134
65-69	Apricot	147
70-74	Fire	19
75-79	Cosmetic Peach	184
80-84	Industry Sodium	650
85-89	Sodium	651
90-94	Urban Sodium	652

Group 3- Rosco Color

Gel range	Gel Name	Gel Number
5-9	30 Magenta	4730
10-14	60 Magenta	4760
15-19	90 Magenta	4790
20-24	15 Cyan	4315
25-29	30 Cyan	4330
30-34	60 Cyan	4360
35-39	90 Cyan	4390
40-44	30 Green	4430
45-49	60 Green	4460
50-54	90 Green	4490
55-59	15 Yellow	4515

User Manual

60-64	30 Yellow	4530
65-69	60 Yellow	4560
70-74	Salmon	R41
75-79	Deep Salmon	R42
80-84	Middle Rose	R44
85-89	Daylight Blue	R65
90-94	Green Blue	R77
95-99	Primary Blue	R80

4.8.5. DMX - Ultimate mode

Ultimate mode enables you to control all the modes at once with your DMX control plate.

To select the Ultimate mode touch **UP** or **DOWN** button or use the navigation knob 2 until you reach Ultimate mode icon. Selected icon will turn green. Once Ultimate mode is selected, the channels on your DMX control plate will control:

Channel	Modes
1. Channel	All modes - general dimmer
2. Channel	Mode selection: <ul style="list-style-type: none"> - CCT (Channel 1-9) - HSI (Channel 10-19) - RGBWW (Channel 20-29) - GEL (Channel 30-39) - EFFECTS (Channel 40-49)
3. Channel	<ul style="list-style-type: none"> - For CCT mode – Color temperature - For HSI mode – HUE - For RGBWW – RED dimmer - For GEL – Color Temp. base selection - For Effect – Effect Select* (0-140)
4. Channel	<ul style="list-style-type: none"> - For CCT mode –Green/Magenta - For HSI mode – Saturation - For RGBWW – GREEN dimmer - For GEL – Gel selection (Group 1) - For Effects – Speed 0.5-1.5s (0-255)
5. Channel	<ul style="list-style-type: none"> - For CCT – CCT (0-127) CCT+ (128-225) - For RGBWW – BLUE dimmer - For GEL – Gel selection (Group 2) - For Effects – Fade 0-25.5m/s (0-225)
6. Channel	<ul style="list-style-type: none"> - For RGBWW – WHITE dimmer - For GEL – Gel selection (Group 3) - For EFFECTS – Stop (0-100)/Go (101-255)
7. Channel	<ul style="list-style-type: none"> - For RGBWW – WARM WHITE dimmer

User Manual

*Effects Selection

Effect range	Effect Name
0-9	No effect
10-15	TV
16-20	Welding
21-25	Paparazzi
26-30	Kachusa
31-35	Fireworks
36-40	Explosion
41-45	Test
46-50	Lightning
51-55	Fire Single
56-60	Fire Multi
61-65	Candles
66-70	Clouds

Effect range	Effect Name
71-75	Comet
76-80	Sunrise
81-85	Sunset
86-90	Aurora
91-95	Police
96-100	Security
101-105	Warning
106-110	Fireman
111-115	Color Chase
116-120	Strobe
121-125	Disco Ball
126-130	Snake
131-135	Snake Reverse
136-140	Snake White

5. Controlling Masterpiece with SkyBeast console

Pairing your devices

To be able to control your Masterpiece with SkyBeast console, you should first pair these two devices.

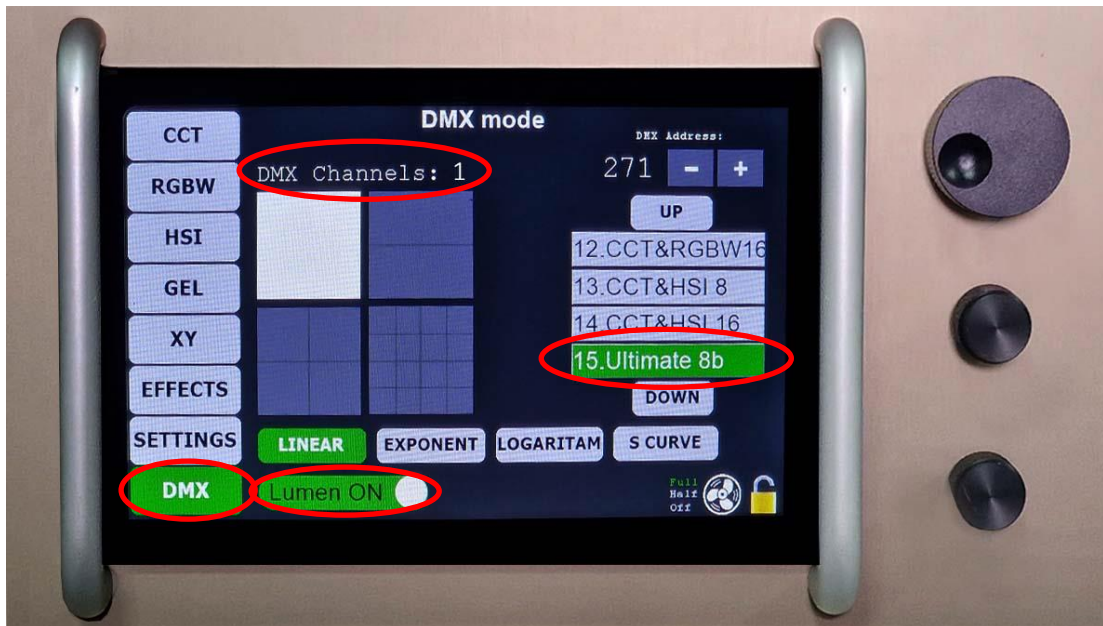
- **Here are the settings you need to make on your Masterpiece:**

1. Select DMX mode on your Masterpiece
2. Select Ultimate mode (8 bit or 16 bit)
3. Set Lumen radio – ON
4. Select desirable DMX channel of your Masterpiece.

Pay attention that the number of DMX channel selected on your Masterpiece must match the number of the selected bank on your SkyBeast console!

The picture below shows the necessary selections:

User Manual



- Here are the settings you need to make on your SkyBeast:

- Pres and hold the *Menu* button for 5 seconds to enter the menu
- Use *General Master (-)* and *Mode Select (+)* buttons to navigate the menu until your reach command *Link Lumenradio*
- Press *Menu* button shortly to confirm selection
- Display will show *Linking LumenRadio...*
- When display returns to settings LumenRadio is linked.
- Press and hold *Menu* button for 5 sec to enter the *Menu* once again
- Use *General Master (-)* and *Mode Select (+)* buttons to navigate the menu until your reach command *Masterpiece by Senna*
- Press *Menu* button shortly to confirm selection
- Display will show *Masterpiece selected*
- When display shows DMX channels Masterpiece is paired to the SkyBeast



User Manual

Please make sure that the number of DMX channel selected on your Masterpiece matches the number of the selected bank on your SkyBeast console! There are 16 bank available on your SkyBeast console (each containing 30 channels) + 4 standard mode channels.

Here are the steps you need to take to select a bank on your SkyBeast console:

1. Press **shortly** buttons *General Master* and *Mode select* together.
2. The number of the bank on display will start blinking.
3. Use **navigation buttons** - *General Master* (-) and *Mode Select* (+) until the desirable DMX bank number is shown on the display.
4. To confirm your choice press buttons *General Master* and *Mode select* at the same time again shortly.



You should follow the same steps (above) when you are controlling more than one fixture with your SkyBeast control, and you want to navigate from one fixture to another!

5.1. Mode selection

To select a mode on your SkyBeast console please follow the steps:

1. Press and hold *Mode Select button*.
2. While holding *Mode Select button*, use *1. Channel Potentiometer* to navigate through 6 available modes. Your navigation will be shown on the display.
3. If you choose Gel or Effects mode use *2. Channel Potentiometer* to navigate through sub-modes Groups. (While still holding the *Mode Select button*) and then use *3. Channel Potentiometer* to choose Gel/Effect. Your navigation will be shown on the display.
4. When you have reached desirable mode (and sub-mode), you can release the *Mode Select button*.
5. You can now make adjustments in the selected mode as shown in the scheme in the next chapter.



1. CCT

Channel potentiometer 1 – Volume
Channel potentiometer 2 – Colour temperature (2800K-10000K)
Channel potentiometer 3 – Green/magenta

User Manual

<p>2. HSI</p>	<p>Channel potentiometer 1 – Volume Channel potentiometer 3 – Hue Channel potentiometer 4 – Saturation</p>
<p>3. RGBW</p>	<p>Channel potentiometer 1 – Volume Channel potentiometer 2 – RED Channel potentiometer 3 – GREEN Channel potentiometer 4 – BLUE Channel potentiometer 5 – WHITE Channel potentiometer 6 – WARM</p>
<p>4. GEL SELECT Filters cannot be combined. In order to affect one filter all other filters (channel potentiometers) must be set on 0 positions.</p>	<ul style="list-style-type: none"> • LEE: Channel potentiometer 1 – Volume Channel potentiometer 2 – Colour temp. base (3200K or 5600K) Channel potentiometer 3 – Gel selection - Colour correction Channel potentiometer 4 – Colour filters • ROSCO: Channel potentiometer 1 – Volume Channel potentiometer 2 – Colour temp. base (3200K or 5600K) Channel potentiometer 3 – Colour correction
<p>5. XY COORDINATES</p>	<p>Will be available soon!</p>
<p>6. EFFECTS:</p>	<p>Channel potentiometer 1 – Volume Channel potentiometer 2 – Speed Channel potentiometer 3 – Fade Channel potentiometer 4 – Stop/Go</p>

5.2. Memory pre-sets

When you have made adjustments of the modes you can store your own memory pre-sets. There are 6 memory pre-sets available for each bank. To store a pre-set please follow the steps:

1. Make all adjustments of operational modes you want as described in the previous chapter
2. Press and hold one of the memory buttons until all memory buttons turn red.
3. Memory pre-set is now saved.
4. To recall previously stored pre-set, press shortly the memory button on which you have stored the pre-set. Memory button will turn green. Channel potentiometers will automatically get into positions of recalled pre-set.
5. Fade speed between memory pre-sets can be adjusted using *Fade Speed knob* **except for Gel select mode and Effects.**



User Manual

*If you change the bank and select another DMX fixture, stored pre-sets will not be deleted. You will be able to recall them when you return to the bank.

5.3. Auto Memory recall

After you have stored the desired light pre-sets, you can set the automatic memory recall of the session of pre-sets.

To set auto memory recall, please follow the steps:

1. Press and hold *Menu* button and while holding it press memory button with which you would like to start the recall session. Red light on the memory button will turn on.
2. Now press memory button where the second wanted pre-set is stored. Second memory button will turn green.
3. Repeat the step 2 until you have set all wanted memory pre-sets in desired recall session. Recall session can contain up to 20 pre-sets (You can set the same pre-set in session more than once, **except for the memory pre-set you have set as the first in session**)
4. Now you can release the *Menu* button.
5. Auto memory recall session is now stored.

IMPORTANT: Start pressing the memory buttons right after you have pressed the *Menu* button. If you wait for too long you will enter the Menu.

To activate *Auto Memory Recall* please follow the steps:

1. Press the *Menu* button shortly.
2. First memory pre-set will light up and then each next added pre-set and they will stop at the last memory pre-set stored in session.
3. Speed of fading from one recalled light pre-set to another can be adjusted with the ***Fade speed knob***.

Speed of alteration of light pre-sets can be adjusted with the ***Strobe/Chasing speed knob***.

5.4. Memory Loop cycle

This option allows the system to constantly loop over the stored light pre-sets in the order you have set.

To set memory loop cycle option, you should follow the steps 1-5 in the chapter 4.4. *Auto Memory Recall* with one difference: **make sure to set the same light pre-set as the first and the last in the memory recall session!**

Set as described, the light will keep looping the light pre-set session as long as you do not press the *Menu* button shortly once again.

Speed of fading from one recalled light pre-set to another can be adjusted with the ***Fade speed knob***. Speed of alteration of light pre-sets can be adjusted with the ***Strobe/Chasing speed knob***.

User Manual

5.5. General Master Settings

General Master Settings affect all DMX fixtures you have connected to SkyBeast console at once.

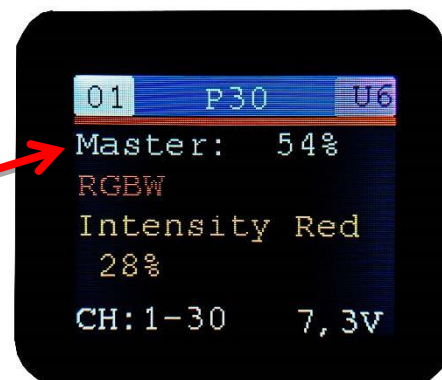
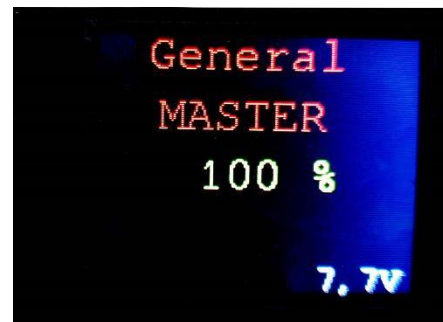
This option enables you to:

- Change volume of all DMX fixtures at the same time
- Turn Strobe on all DMX fixtures
- Turn Chasing lights option on
- Recall memory positions (1-6) on all DMX fixtures at the same time

5.5.1. General dimmer control

In order to control dimmer on all DMX fixtures at the same time without entering each bank separately, please follow the steps:

1. Press and hold *General Master button* until the LED bulb on the button turns ON.
2. Release *General Master button*.
3. *Channel potentiometers 2-8* will go to 0 position and display will show percentage of general dimmer that has been previous set. (see the picture on the right)
4. Use **Channel potentiometer 1** to increase/decrease dimmer of all DMX fixtures that have dimmer control on DMX channel 1
5. To exit *General Master* Settings, press and hold *General Master Button* until the LED bulb on the button turns OFF.
6. Now that you have set General dimmer, percentage of general dimmer will be shown on display all the time with red line.



5.5.2. Chasing lights

In order to activate Chasing lights of all DMX fixtures, please follow the steps:

1. Make all desirable adjustments on all DMX fixtures.
2. Press and hold *General Master Button* until the LED bulb on the button turns ON.
7. Release *General Master Button*.
3. All fixtures will turn on.

User Manual

4. Press *Mode Select button* shortly.
5. **All panels will turn off.**
6. Press *Mode Select button* shortly once again.
7. Chasing lights is active.
 - To adjust the speed of Chasing lights, use the *Strobe/Chasing Speed knob*.
 - To set direction of Chasing lights (clockwise/counter-clockwise) use *Potentiometer 2*.
 - To activate loop of Chasing lights (on/off) use *Potentiometer 3*.
 - To set the number of fixtures included in chasing session use *Potentiometer 4*.
 - To activate random Chasing option (on/off) use *Potentiometer 5*.
1. To exit *General Master Settings*, press and hold *General Master Button* until the LED bulb on the button turns OFF.

5.5.3. General memory recall

To recall memory pre-sets on all connected DMX fixtures at the same time, please follow the steps:

1. Enter General Master by pressing and holding *General Master Button* until the LED bulb on the button turns ON.
2. Press shortly desirable memory button (1-6).
3. Each DMX panel will turn to the memory pre-set you have previously saved on that memory button. (For example, if you press memory button 1, all fixtures will load memory pre-set 1, and so on)
4. Fade speed between memory pre-sets can be adjusted using *Fade Speed knob*.
5. To exit General Master settings, press and hold *General Master button* until the LED bulb on the button turns OFF.

User Manual

6. WARRANTY LETTER

1. The Supplier warrants that on delivery, and for a period of 24 months from the date of Delivery (warranty period), the Goods shall:
 - a) conform in all material respects with their description and any applicable Goods Specification;
 - b) be free from material defects in design, material and workmanship;
 - c) be of satisfactory quality

2. In the case of any above mentioned:
 - a) The Customer shall give notice in writing during the warranty period within a reasonable time of discovery that some or all of the Goods do not comply with the warranty set out above;
 - b) The Supplier shall be given a reasonable opportunity of examining such Goods; and
 - c) The Customer (if asked to do so by the Supplier) shall return such Goods to the Supplier's place of business at the Supplier's cost, the Supplier shall, at its option, repair or replace the defective Goods, or refund the price of the defective Goods.

3. The Supplier shall not be liable for the Goods' failure to comply with the warranty in clause 1 if:
 - a) The Customer makes any further use of such Goods after giving a notice in accordance with clause 2a;
 - b) The defect arises because the Customer failed to follow the Supplier's oral or written instructions as to the storage, installation, commissioning, use or maintenance of the Goods or good trade practice;
 - c) The defect arises as a result of the Supplier following any drawing, design or Goods Specification supplied by the Customer;
 - d) The Customer alters or repairs such Goods without the written consent of the Supplier;
 - e) The defect arises as a result of fair wear and tear, wilful damage, negligence, or abnormal working conditions;
 - f) The Goods differ from their description or the Goods Specification as a result of changes made to ensure they comply with applicable statutory or regulatory standards;
 - g) The Goods have been installed, operated and maintained other than in accordance with good cinematographic practice and recommendations of the manufacturers

4. The terms of these Conditions shall apply to any repaired or replacement Goods supplied by the Supplier under clause 2c.